

Bulletin

Volume 31 Number 9

July 2007

BOROUGH COUNCIL NEWS

Local Purpose Tax to Rise 54%; Utility Rates Up 4% With Lower Overage Threshold; Summer Water Restrictions in Effect

By Michael Ticktin

At its May 29 meeting, the Borough Council adopted a resolution to introduce the municipal budget for 2007. The vote on adoption was scheduled for June 28.

The most notable feature of the proposed budget, from the standpoint of local taxpayers, is an increase of over 54% in the local purpose tax. The local purpose tax is the portion of the property tax that is used by the municipality, and not by the county or the school district. In 2006, it constituted 18.5% of the total property tax. The actual increase in the local purpose tax levy would be \$145,421.00. Of this, \$57,800.00 would be needed to compensate for an anticipated decline in surplus, \$52,900.00 would be to pay anticipated legal expenses and \$29,900.00 would be to pay anticipated Planning Board expenses, which would also be mainly legal expenses.

One reason for the sharp increase in legal expenses is that the Borough is currently being sued by Yisroel Eisenberg and Paul Brottman, who are seeking to block enforcement of a ruling by the former zoning officer that the house at 53 North Rochdale Avenue is being illegally used as a dormitory. It is the contention of the plaintiffs that the Congregation Yeshivas

Me'on Hatorah students who have been sleeping there have been doing so as the guests of Rabbi Eisenberg, the tenant of the house, and that they must be deemed to be the constitutional equivalent of a single family household. The case is scheduled to be heard in Superior Court in October. The Borough also has to be prepared to fund any further proceedings or litigation that may arise.

At the June 11 meeting, the Council introduced an ordinance raising municipal utility charges by 4%, while lowering the threshold after which charges for higher usage are imposed from 20,000 gallons per two months to 12,000 gallons per two months. The cost per gallon for usage above the threshold would be increased from 0.04 cents to 0.08 cents. According to Councilman Bob Silverstein, most users are below the 12,000 gallon threshold, and the Council considered it appropriate to have those who use more water pay a greater part of the cost of the utility. In addition to bringing in revenue considerably exceeding the \$500.00 in overage charges that was collected last year, the new rates are expected to further encourage con-

Continued on Page 5

INSIDE THIS ISSUE

| | | | |
|-------------------------------|---|-----------------------------|----|
| From the Mayor | 3 | Recreation Programs | 10 |
| Town Topics | 4 | Breaking Bread | 11 |
| School News | 5 | Weather Almanac | 12 |
| Greenbelt Gossip | 6 | Roosevelt Arts Project | 13 |
| Environmental Commission News | 7 | Supporters and Contributors | 14 |
| Two Square Miles of Stories | 8 | Business Sponsors | 15 |

ANNOUNCEMENTS

This is the last issue of the 2006 - 2007 edition of our paper. The next issue which begins the 2007 - 2008 edition will appear in the first week of October. To repeat, the Bulletin is issued every month from October thru July, leaving out January, August, and September. The new season begins in October of each year.

Dr. Rachel Ticktin, daughter of Michael and Marilyn Ticktin, graduated in May from the University of Pennsylvania School of Veterinary Medicine. She has joined the practice of the Toms River Animal Hospital as an associate veterinarian.

NOTE! New dates and times for the Council meetings. They will be the second and fourth Mondays of the month at 7 p.m. Come and see what's happening!

Please report any bear sightings to:
State Bureau of Wildlife Management
Kim Tinnes
Wildlife Control
609-259-7955
As well as to David Schwendeman, 443-6204



Parents: It has come to our attention that many children as well as teenagers have been playing in the streets. Before there is an accident because of on-coming cars, please make sure that this practice is stopped.

PLEASE REMEMBER: Thoughtful neighbors pick up after their dogs. Are you a thoughtful neighbor?

The Roosevelt Borough *Bulletin* is published monthly except August, September, and January by Roosevelt Borough Bulletin, Inc. Box 221, Roosevelt, NJ 08555 609-448-2701

BOARD OF TRUSTEES

Bob Clark, Kevin McNally, Deidre Sheean, Michael Ticktin, Bess Tremper

EDITOR

Michael Ticktin

MANAGING EDITOR

Bess Tremper

TREASURER

Kevin McNally

CONTRIBUTING WRITERS

| | |
|-------------------------|-------------------|
| Elsbeth Battel | Jane Rothfuss |
| Ron Filepp | Clare Sacharoff |
| Janice Fine | Eric Schubiger |
| Florence Johnson | David Schwendeman |
| Herb Johnson | Bob Silverstein |
| Manuela & Mark McCusker | Michael Ticktin |
| Shari Payson | Carol Watchler |

BUSINESS

Kevin McNally

PRODUCTION

| | |
|-----------------------|------------------|
| Louise Baranowitz | Diane Klein |
| Ron Filepp | Judy Nahmias |
| Cynthia Imbrie | Eleanor Pedersen |
| Florie & Herb Johnson | Clare Sacharoff |
| Jane Kiersnowski | Bess Tremper |

GRAPHIC DESIGN

Karyn Grunwald

ARTWORK

Calendar Art by Shan Ellentuck
Breaking Bread Art by Robin Middleman

Roosevelt Borough *Bulletin*, Inc. is a New Jersey Non-Profit Corporation

For a long time, members of the Roosevelt Planning Board have felt it would be useful to have articles appear in the *Bulletin* that would help explain the responsibilities and practices of the Planning Board, as well as the purpose of zoning and the importance of the master plan as the foundation for land use planning in Roosevelt and all municipalities in New Jersey. This is the first of such articles, with the hope and plan that others will follow as need demands and time allows.

The Planning Board of Roosevelt is appointed by the mayor according to the 1975 *Municipal Land Use Law*, N.J.S.A. 40:55D1 et seq. (hereinafter referred to as the *MLUL*). The board is directly responsible for practically all land use decisions, except when preempted by other agencies. Roosevelt's planning board is what is known as a combined board, in that it actually performs two functions, acting as a planning board and a zoning board of

adjustment. To describe these two functions, I will quote two excerpts from the first chapter of *Guide to Planning Boards and Zoning Boards of Adjustment*, by Glenn C. Kienz, a publication of New Jersey Planning Officials.

"A Planning Board can be summarized as the board of "permitted activities." That is, the planning board's essential duties are to deal with policy (the master plan) and the implementation of that policy through the zoning, site plan and subdivision ordinances.

These ordinances establish a series of ground rules to be met by an applicant. If the applicant meets the requirements of the particular ordinance, the board must approve the subject application...."

"The Zoning Board, on the other hand, is the board of "non-permitted uses." That is, zoning boards deal with the issuance of variances. Variances are based upon the individual municipality's zoning ordinance. The

zoning ordinance establishes specific requirements for the land area within a municipality and regulates not only the uses permitted, but the size of the parcels, setback required, parking, signs, conditional uses and numerous other such regulations."

In future articles, the regulations that govern planning board decisions and the specific criteria contained in the *MLUL* for the granting of variance requests by zoning boards will be discussed. If you have any questions or topics of community interest that you would like to see addressed here, please send a note to the Planning Board at Borough Hall, PO Box 128. Everyone is invited to come to meetings to see how things work. The Planning Board generally meets on the second Tuesday of each month at 7:30 at Borough Hall. Check the legal postings of meeting times and dates at the Post Office, Borough Hall, or in the *Asbury Park Press* and *The Times* for specifics and any date changes. ■

From the Mayor

By Elsbeth Battel

Congratulations to all the graduates of 2007. Best wishes for your future endeavors at this exciting time of your lives.

Roosevelt has been recognized by the State Legislature which passed a resolution honoring and congratulating the citizens of Roosevelt on the Borough's 70th Anniversary. Originally incorporated as Jersey Homesteads in 1937, Roosevelt has earned a place on both the State and National Historic Registeries because of it's continued adherence to the Garden City style layout of the initial master-plan. Although no longer an Agro-Industrial co-operative, it is still a small town with a character all it's own, and still "the best town to live in" in New Jersey. ■

SENIOR CLUB NEWS

By Clare Sacharoff

Seventeen members attended the June 4th meeting.

The members decided to go on the paddle wheel boat trip to be held Tuesday, Aug. 28th. People will be picked up by bus approximately 10:30 a.m. and arrive at Toms River about 11:30. There will be lunch served aboard the boat plus a lecture about the history of the area. This trip has been taken previously and most people expressed enjoyment of it.

For the June 19th Tuesday trip, the group attended the local cinema preceded by lunch at the East Windsor American Buffet.

Chicken and salad was the menu for the monthly luncheon held Friday, June 29th at 12:30 p.m.

Florie Johnson provided several delicious varieties of home-baked cakes and cookies at the June meeting.

Our sincere condolences are extended to Louise Baranowitz on the loss of her beloved pet bird Freddie.

Clare Sacharoff was hostess for the July meeting. The August meeting will be held Aug. 7th. ■

Legislature Joins Roosevelt in Celebrating Our Seventieth Anniversary

By Michael Tickin

At its May 29 meeting, the Council adopted a resolution declaring May 29 of every year to be Jersey Homesteads Charter Day, marking the enactment on that date in 1937 of the law that incorporated about 1240 acres of land in Millstone Township as the *Borough of Jersey Homesteads*. The Borough was renamed *Roosevelt* in 1946 in tribute to the recently-deceased President under whose administration's auspices the community had been founded.

In honor of the event, the New Jersey Legislature, at the initiative of Assemblywoman Nilsa Cruz-Perez of Camden County, a long-time friend of Roosevelt, adopted the following Joint Legislative Resolution:

Whereas, The year 2007 marks the auspicious occasion of the Seventieth Anniversary of *Roosevelt Borough*; and,

Whereas, The Senate and General Assembly of the State of New Jersey are pleased to honor the citizens of Roosevelt Borough as they observe this important milestone of the Borough's heritage and achievements; and

Whereas, Incorporated by act of the Legislature on May 29, 1937, as Jersey Homesteads, Roosevelt Borough is the only municipality in the State that is an historic district in its entirety; and

Whereas, One of ninety-nine communities established by the Roosevelt administration, its design was based on the English garden city concept, and its buildings, which were constructed by the W.P.A., incorporated concepts developed in the 1920s by architects of the Bauhaus movement in Germany; and,

Whereas, Throughout its history, Roosevelt Borough has continued to be recognized for its desirable location and for its reputation as an excellent community for family living; and

Whereas, Roosevelt Borough has been guided, for seven decades, by citizens of character and public-spiritedness, and its leaders of today continue Roosevelt Borough's tradition of effective government; and

Whereas, It is altogether proper and fitting for the New Jersey Legislature

to acknowledge and salute the citizenry of Roosevelt Borough as they celebrate seventy years of successful participation in the history of New Jersey and our nation; now, therefore,

Be it resolved by the Senate and General Assembly of the State of New Jersey:

That this Legislature hereby honors and congratulates the citizens of Roosevelt Borough in recognition of their community's Seventieth Anniversary, and extends best wishes for their continued success and prosperity in the decades to come; and,

Be it further resolved, That a duly authenticated copy of this resolution be signed by the Senate President and the Assembly Speaker and attested by the Senate Secretary and the Assembly Clerk.

Richard J. Codey, President of the Senate

Joseph J. Roberts, Jr., Speaker of the General Assembly

Attest: Ellen M. Davenport, Secretary of the Senate

Attest: Dana M. Burley, Clerk of the General Assembly ■

TOWN TOPICS

Roosevelt Organic Farm Stand Begins on June 29

By Carol Watchler

Shareholders in Roosevelt's *Community Supported Agriculture* organic farm continue to express great satisfaction in the bounty of produce that they have received over the past four weeks.

A new aspect of the farm that will be available for the public is the farm stand which begins on Friday, June 29, and will be open on Fridays, Saturdays, and Sundays, 9 a.m. to 7 p.m.. The

farm is located at 10 Nurko Road off Route 571 in Roosevelt.

Produce, flowers, and herbs picked at the farm will be available for sale at the stand.

Roosevelt Peace Action Events

By Herb Johnson and Bob Silverstein

The Peace DVD will be the "film for the fourth Wednesday" on July 25th at 7:30 p.m. in the Borough Hall. The documentary shows how people across our country have organized to con-

vince our government to end wars. It shows how people can have power to promote peace.

In a discussion following the film, a decision to determine which projects for the coming year to focus on will be made.

At the June meeting, *Sir, No Sir* was seen. It told about the efforts of soldiers and sailors to end the Vietnam War. Afterwards, suggestions for projects this summer were made.

Roosevelt's *Peace Action Committee* invites everyone to attend and be active for peace. ■

From the Office of the Principal, Shari Payson

The close of the 2006-2007 school year came in a flash. It was a busy, productive year that went by quickly. Graduation was held on June 16th. It was an honor to preside over the seventieth commencement ceremony. The day was lovely, the students looked handsome and beautiful, and the audience was wonderful. Our sixth graders were poised and delivered well-written essays about how they have changed. Thanks to Ms. Glickman, our band members were on hand to play *Pomp and Circumstance* and *The Star Spangled Banner*. Honors earned by the graduates are as follows:

- Nathan Bard Social Studies Award..... Amber Nolan
- Graham Nisnevitz Math Award..... Kimberly Ng
- Oscar Nisnevitz Citizenship Award..... Kevin Lenart
- Mayor’s Leadership Award Rebecca Zahora
- Fund for Roosevelt Environmental Issues Ellen Rothfuss
- Outstanding Artist Award..... Jesse Schuster
- Outstanding Musician Award..... Rebecca Cordo

We are grateful to the members of the community who generously give these gifts each year to our graduating class. Thank you to everyone that has given so much of their time and shared their expertise. Your dedication to education is unsurpassed and truly appreciated. This has been a fantastic school year.

Congratulations to the families of all our graduates – in elementary school,

middle school and high school.

I want to remind everyone that the summer recreation program is available for children from kindergarten through grade 8. Anyone interested in information should contact Eric Schubiger at Borough Hall for information.

Substitute teachers are needed for September. To be eligible, a candidate must have 60 college credits.

Paperwork for substitute teaching can be obtained in the main office. I would be happy to explain the procedure to anyone who is interested.

Please check our school website www.rps1.org for the school calendar and events.

The administrative staff will be in the building during the summer. Feel free to contact us if you need any information. Have a wonderful summer! ■

BOROUGH COUNCIL REPORT

Continued from Page 1

servation of water, which was the reason that the Department of Environmental Protection (DEP) required the Borough to institute metering in the first place. At the same meeting, the Council also introduced an ordinance authorizing an appropriation of \$154,000.00, most of which would be paid by the proceeds of bonding in the amount of \$146,000.00, to finance improvements at the water and sewer plants, as well as an ordinance appropriating \$6,000.00 for the relocation of the siren from the pump house on the water tower tract to a location behind the FDR Memorial near the

school, which is a central location from which the siren can be heard throughout the town.

Also at the June 11 meeting, the Council approved the application for the renewal of the alcoholic beverage license held by R.R. & F., Inc., trading as Roosevelt Wine and Liquor. Even though the applicants no longer own a store in Roosevelt, they are entitled to hold the license for a limited period of time, so that anyone else who might want to open a liquor store would have to buy the license from them. At the May 29 meeting, the Council had approved

adoption of an ordinance increasing the annual fee for the license to the extent allowed by law.

At the May 29 meeting, Administrator Bill Schmeling announced that he was working with a Planning Board committee to develop application forms that would be more informative and “user-friendly” and that increased fees, more in line with those of other municipalities, would be proposed. He reported that the gas station tanks had been removed, that the amount of contamination of the underlying soil “did not appear to be that

Continued on Page 7



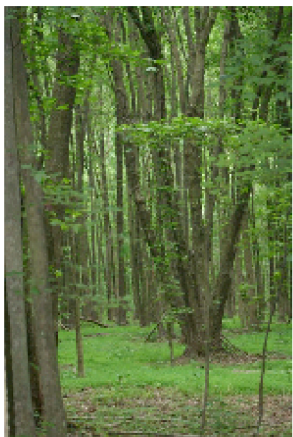
Greenbelt Gossip

July's greenbelt display of flora and fauna beckons an awakening of man's consciousness and conscientiousness towards all life. It is not only a time to appreciate the multitude of nature's



marvels and creations, but also to connect with how man relates to and impacts this natural environment.

Did you know that woodland areas such as our greenbelt contain a diverse assemblage of plants, animals and microscopic species of the several kingdoms of life that interact with and rely on each other? Trees dominate this forest food chain, also known as an ecological pyramid. The combined weight of living organisms in a habitat is termed a biomass. In a temperate forest, such as ours, the biomass of the plants is considerably larger than the

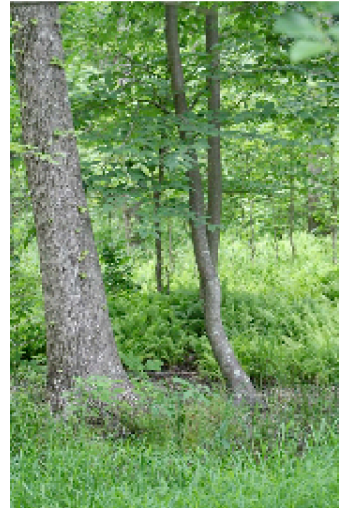


biomass of the animals. Although there are usually billions of insects and other arthropods, such as ants, flies, aphids, spiders, as well as other animals (worms, birds, squirrels, etc.), their combined weight is far less than the combined weight of the plants in that area. However, in a habitat such as

our greenbelt, all life is important and plays a significant role.

Plant species predominate in woodland areas. Several factors define a forest area: types of trees, indicator species (which are the most abundant?), soil type, soil moisture, population patterns, the forest's age, forest gaps, forest border transitions, populations of non-plant species and the complexities of the various food chains. Changes, whether sudden or gradual, can alter these factors and adversely affect many or all species in an ecosystem, especially since nature

functions through an intricate network of interactions. There are three forces of nature that determine a plant or animal species's success: (1) distribution and dispersal, (2) physiological tolerance, and (3) a little



bit of what seems like luck to survive "acts of nature", such as severe storms or droughts. Then... there are the human influences. Over eighty percent of the forests in New England were cut down and the land they had occupied turned into home sites and farmland following European settlement. The establishment of towns and cities resulted in agencies, businesses, farmers and homeowners introducing a variety of toxic pollutants into the environment, causing very negative changes in water tables and ecosystems. Some of these practices continue today, even though the

effects work to the detriment of the network of all the involved natural habitats.

Roosevelt is famous and admired for its greenbelt areas, which need to be protected to ensure their health and continuity. Here are some "greenbelt etiquette" practices that anyone can easily follow in order to help protect these surprisingly fragile areas that enhance the beauty of our town in an abundance of ways. Please:

- ✓ Do not add "artificial" and unnatural layers of leaf and other organic debris to the greenbelt floor by dumping your property's lawn and tree litter, as this can and does prevent delicate, often already uncommon native seedlings from emerging, also changing the temperatures of components of the ecosystem.
- ✓ Do not drag large branches across or deposit branches in the greenbelt, as it disturbs delicate, emerging native plants, often destroying many years of growth and uprooting woodland wildflowers, such as jack-in-pulpit, ferns and other native species.

✓ Do not store construction materials on or near the greenbelt, as these can contribute minerals and toxins to the ecosystem, altering the natural soil and water balances and/or poisoning our shared environment.

✓ Do not deposit oils, insecticides, herbicides or household chemicals in the greenbelt areas, all of which will create soil imbalances and conditions toxic to life.

✓ Do not let dogs run loose in the greenbelt, as this can disturb emerging and existing plants, insect worlds and other life. In addition, bacteria from

Continued on Page 9

Empty Box Brook Restoration Project

There was a wonderful turnout for the Empty Box Brook Restoration Project on Saturday June 9 and Sunday, June 10. We had about 20 volunteers show up to spend from 1 to 20 hours of work over the course of three days. Everyone who worked deserves a medal.

My first trip to the center of the flooded area reminded me of an old Tarzan movie where explorers had to hack their way through the jungle to reach their destination. At times it was sweltering hot with a lack of trees for shade. The bugs were not too bad but everyone who entered the flooded zone had reddish mud up to the knees and beyond. I fell three times tripping over dead fallen trees that sporadically crossed our trails. It was really challenging.

Two hundred and seventy six (276) trees were planted in man-made mucky

mounds or into holes bored into fallen trees by members of the Creative Habitat team and our volunteers. In no special order let me thank those under 21 who made the expedition to the work site and braved the environmental extremes encountered there — Annika Aakhus, Ellen and David Rothfuss, Daniel Garton and James Silverstein. To these five young volunteers and all the adults who participated — the Roosevelt Environmental Commission and the Borough of Roosevelt thanks you! More details will follow in a future article and more follow-up work still has to be done so please watch for requests for more help.

Litter Pick-Up

Many residents and friends came out for the traditional Spring Litter Pick-up again this year. All important areas were covered and lots of garbage was collected from our road sides. This

year's date just happened to coincide with Earth Day which was a nice coincidence. The traditional brunch followed at Lenny Hillis and Michelle Guye's home and again a big thank you to them for their hospitality.

It is not an exclusive club and everyone is invited to participate so watch for the notice for the Fall Litter Pick-Up information.

Our Next Meeting

If anyone has a newsworthy nature note of interest or comment of environmental concern, please give me a call at 609-443-6204 or drop a note to PO Box 203. Thank you for reading this column.

Our next scheduled Roosevelt Environmental Commission meeting will be held Wednesday evening at 7:30 p.m. on July 18, 2007. Everyone is welcome to attend. ■

BOROUGH COUNCIL REPORT

Continued from Page 5

bad," that 150 to 170 cubic yards of soil had to be removed, and that an environmental report on the property was being prepared by the project consultant and would be received by the Borough and submitted to the DEP by late summer. (At the June 11 meeting, Mr. Schmeling said that the report would probably be ready before the end of July.)

At the June 11 meeting, Councilman Silverstein thanked the approximately 25 people who had participated in a weekend project to plant 250 trees in the formerly forested area around Empty Box Creek, between Valley Road and Rochdale Avenue, that has become a swamp due to blockage of the creek. Though the DEP does not currently look favorably upon the drainage of swamps

in order to restore forests, Mr. Silverstein reported that the creek has been gradually returning to its prior channel. Thus, there is hope for the forest to eventually be restored. Also at that meeting, Councilwoman Arlene Stinson reported for the Planning Board that Tim Hartley, an alternate member of the Board, was working with Millstone officials to prepare an application for a grant to establish an inter-municipal bike path and that the Board was working on the "user-friendly" application forms to which Mr. Schmeling had referred at the prior meeting.

Also at the June meeting, the Council approved the annual limitations on summer water usage. Beginning June 15, watering of lawns, filling of pools and

washing of cars will only be permitted between the hours of 6:00 a.m. and noon on odd days for houses with odd numbers and on even days for houses with even numbers. It will be allowed for all houses on the 31st of July and of August. There had been some comments made to the Council that restrictions were no longer necessary, since metering should be sufficient to discourage excessive use. However, the Council concluded that it would not be advisable to rely solely upon aversion to higher payments to provide assurance of a sufficient supply of water in the tank to provide the pressure that would be needed in the event of a fire. ■

Two Pictures, Two Stories

The handwriting was not in Evelyn Donnelly's distinctive script. There it was though, clear but faded, on the back of the photo:

"96 Paul Gore Street 1917"

Across the front of the aged photograph sat members of a family on the front porch, staring into the lens. In it, James Leo Donnelly appeared with his sister and mother, in front of the house where his grandson David would live close to eighty years later.

The Donnellys lived on Paul Gore Street in Jamaica Plain, Massachusetts, a neighborhood within Boston city limits, in the 1910s. They were second generation Irish like many who inhabited the Boston area at the time.

What made the photograph so eerie was that they were tenants at the time, and that David moved into the house in 1996 as a tenant as well, to join me in my apartment. I had been living at 96 Paul Gore Street since 1991. We knew nothing of David's grandfather having once lived there.

We met in 1995 working on a campaign in Maine together, and decided after a year of dating that he would move from Portland to Boston to live with me in Jamaica Plain. At the time, David's grandmother, Evelyn, remarked that she recalled her husband – David's grandfather – had lived in that neighborhood when he was a teenager, even saying that Paul Gore Street sounded familiar. David's grandfather had passed away earlier in the 1990s so it wasn't possible to ask him. One day as Evelyn tackled sorting through old photographs to



prepare to move out of her house and into an assisted living home, the photograph – and its inscription on the back – stopped her in her tracks.

Nana – what we all called her – quickly rifled through her address book, looking at the address on the back of the photo in one hand and her grandson's new address in the other. Oddly enough, this wasn't the only Donnelly family connection to my place on 96 Paul Gore Street. When I sublet my apartment while living in Sri Lanka for six months in 1994, two years before David and I met, David's parents actually knew the people who rented from me, and stayed in my apartment while I was away.

That photo of our house hung on what we came to call our "ancestor wall" alongside a photographic portrait of my father, Robert Fine, in his WWII bomber helmet. Having carried that portrait with me for years from apartment to apartment, it reminded me of what my father instilled in my sister, my brother, and me – to go all the way for what you believed

in—even if it meant going to prison. After WWII ended, my father enlisted in the Israeli Air Force – an action he took despite knowing that it was against the law (it was considered treasonous for American citizens to fight under any other flag). Of the 357 pilots in the Israeli Air Force at the time of the War of Independence, 108 came from the United States and most were veterans of WWII.

When I was growing up, my father would regale me and my siblings with his tales of derring-do, like helping to assemble the Israeli Air Force by stealing airplanes from across Europe and flying them to Tel Aviv and Jerusalem, always one step ahead of the British authorities. Other stories were more poignant: he was shot down six days into the war and spent a year in Al Mazza prison in Cairo "saluting King Farook."

I have always had a complicated and conflicted relationship with Israel, so proud of the Jewish homeland and the role my father and his generation played in establishing it, yet deeply troubled by the Israeli occupation of the West Bank and Gaza and violations of the human rights of Palestinians. (That's a topic for a different day, and also the subject of an NPR piece I recorded for *All Things Considered* a few years ago.)

One promise my father and I were not able to keep was to visit Israel together with my siblings. By the time we had the means to go, he was too ill to travel.

Continued on Page 9

TWO SQUARE MILES OF STORIES

Continued from Page 8



My Father, Robert Fine

Right after I met David, he traveled to Jerusalem to visit his brother who was a reporter stationed there for the *Miami Herald*. I couldn't stand it. I flew there impulsively to travel with him.

As soon as I got there, we made plans to trace my father's footsteps. We went to the Haganah Museum, dedicated to those who formed the underground that founded the State of Israel, and began to ask questions of the archivist. As he typed my father's name into his computer, an historian at a nearby table offered cryptic tidbits of advice, including the name and number of the chief historian of the Ministry of Defense. I called.

"Hello, my name is Janice Fine. My father fought in the Israeli Air Force in 1947, and was shot down over the Gaza Strip. I'm trying to find out more about him."

After an impossibly long silence, the gruff historian replied:

"First of all, it was a forced landing..."

The next thing we knew, out of David's brother's fax machine scrolled 14 pages, all in Hebrew which included all the records of my father's service, including his discharge papers and his description of the circumstances under

which he was imprisoned. It was haunting to see his signature as a young man so many years after he had died.

The historian – whose name I can no longer recall – also provided me with the name and number of my father's commanding officer while in prison in Cairo, Palty Makleff. I called Palty. He and his wife Sara were known to me from childhood stories as the "Flying Makleffs" a young husband and wife team who trained at an underground airstrip in Bakersfield, California. They agreed to meet us for drinks the next day in Tel Aviv.

The Makleff's shared stories that had not appeared to have faded one bit over fifty years. They even had visited my father and mother, Betty Ann, in Brooklyn after he returned home but before my parents had started a family. Apparently, my parents were quite proud of a new air conditioner propped in their apartment window.

We moved to Roosevelt just two years ago this August. Amid the renovations, the unpacking, and the getting settled in numerous ways, we have yet to select where the ancestor wall should be in our new home. Yet sharing these stories makes me want to reunite Robert Fine and James Leo Donnelly in a place where we can see them each and every day. ■

About Two Square Miles Of Stories

Everyone in our two-square mile town has old family photographs and memories of the people in them. These pictures and your memories are narratives waiting to enrich us all. So, join us in a Roosevelt Show and Tell project - find an old picture or two and tell us a story in a few paragraphs.

For information telephone:

Pearl Seligman 448-2340

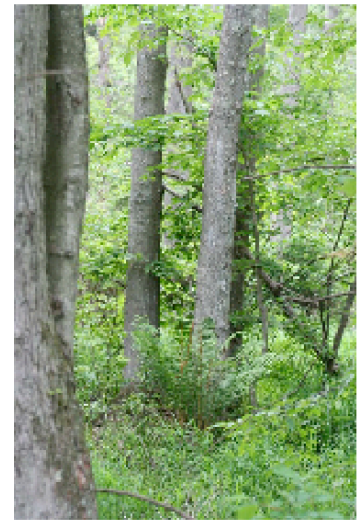
Bess Tremper 448-2701

GREENBELT GOSSIP

Continued from Page 6

pet wastes often negatively alter the environment.

Most of the homes in our town provide large yard areas where a small compost pile can be made that transforms organic materials such as leaves and grass clippings into valuable fertilizer. Branches can be tucked in a corner, pending the annually scheduled pick-up day. Unwanted construction materials may be taken for pennies a pound to the nearby *Mazza Facility*, located at 3230 Shafto Road, Tinton Falls, NJ. One last note from the NJ Audubon Society on forest health and ecological integrity - "In addition to exotic diseases and insects, non-native animals also pose very serious threats to wildlife. Feral



cats and free-ranging housecats kill hundreds of millions of birds, small mammals, frogs and reptiles in the U.S. annually. Predation from feral cats and free-ranging housecats is one of the leading sources of mortality for many rare, threatened and endangered species in many parts of our country." Please help keep our Greenbelt area as nature intended, so that we, as well as the plants, animals and members of the other equally valuable kingdoms of life can continue to benefit. ■

Summer Camp Program

The Roosevelt Recreation Department will once again be partnering with the Millstone Recreation Department to provide a comprehensive Summer Camp program for Roosevelt children. Further information is available at the Recreation Office.

Mad Science Camp



The Roosevelt Recreation Department is co-sponsoring a Summer Camp Program with Mad Science of Central Jersey entitled *Survival – Predators and Prey*. The program will be held at Roosevelt Public School from 9 a.m. – 12 p.m. on July 23, 24, 25, 26, 27. The cost of the program is \$110.00 per student. Students entering 2nd grade – 6th grades may register. Registration deadline is **July 16th**.

Predator or prey, which will you be? In this newly created nature camp, campers will learn how animals (big and small) adapt to life here on earth. Campers will discover how birds and beasts catch their prey without becoming someone else's lunch. They will then be challenged to survive in the exciting, pulse pounding "Food Chain Survival" game. Children will also discover what Mr. Owl had on his dinner plate during the great owl pellet dissection. Campers will also build a bird house and a bug house to take home with them. This is a truly fun and educational program for children.

Theatre Arts Camp

The Roosevelt Recreation Department is co-sponsoring a Summer Camp Program with Youth Stages, LLC entitled *Act Cool This Summer*. The program will be held at Roosevelt Public School on August 6, 7, 8, 9, 10. A program for students entering 1st – 3rd grades will be held from 9 a.m. – 12 p.m. and a program for students entering 4th – 6th grades will be held from 1 p.m. – 4 p.m.. The cost of the program is \$125.00 per student.

Registration deadline is **July 30th**.

Acting is so cool! Children will take part in theatre games & drama exercises that explore physical & vocal expression. Using a story as the framework, students will bring characters, action, and dialogue to life as they convert the story into a play. The children will create simple costumes and scenery and share their really cool performance piece with family members on the last day!

Theatre Games for Tweens

The Roosevelt Recreation Department is sponsoring a Summer Camp Program entitled "Theatre Games for Tweens." The program will be held at Roosevelt Public School from 7 p.m. – 8:30 p.m. on Wednesdays, July 11, 18, 25, August 1, 8, 15, 22, 29. The cost of the program is \$80.00 per student. Students entering 7th grade – 9th grades may register. Registration deadline is **July 6th**.

This new program will be led by Ms. Kacie Mixon of *Music Together, LLC* and a resident of Roosevelt. Kacie Mixon has been teaching theatre to adults and children for over 15 years and holds a Bachelor of Fine Arts degree from the Mason Gross School of the Arts at Rutgers University. She has taught and performed with George Street Playhouse, *The Shoestring Players*, and *The Alabama Shakespeare Festival*.

This program is designed to be an introduction to theatre basics for anyone who has ever wondered about playing in the theatre, from beginners to experienced performers. The class will spend time with improvisational games, creating characters, and interacting in a playful and nonjudgmental atmosphere, all while exploring our imaginations. Warm-up routines and creative dramatic exercises for the actor's body and voice will be introduced. The program will culminate with a short performance for friends and family that will be optional for students. The only requirements are to bring your sense of humor and a desire to learn! For further infor-

mation regarding class content, please contact Kacie Mixon at (609) 443-9325.

Sports Camp

The Roosevelt Recreation Department and US Sports Institute are pleased to announce that they will be offering a Multi Sport Camp in the Borough of Roosevelt. The US Sports institute is at the forefront of providing summer camps for boys and girls aged 5-14 of all abilities.

Give your child the unique opportunity to experience 15 different sports from around the world. Children can learn how to bowl a Cricket ball, score a try in Rugby, shoot hoops and score plenty of goals in a variety of sports from around the world. All activities and games take place in a positive, low pressure educational environment under the guidance of our qualified coaches who are chosen for their ability to inspire, motivate and encourage campers.

Children can expect a fun packed week in which they will not only further develop their sporting capabilities but develop the interpersonal and teamwork qualities that come with it.

The program will be held the week of August 16 - 20 at the Roosevelt School. It will run from 9 a.m. – 3 p.m. for children ages 7 – 14 and 9 a.m. – 1 p.m. for children ages 5 – 7.

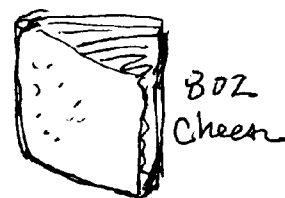
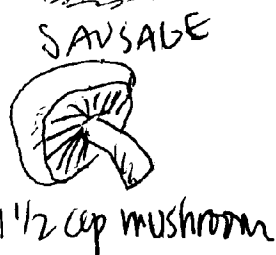
Summer Concerts

The Roosevelt Recreation Department will be coordinating a number of concerts on the school grounds in June, July, and August. Please contact the Recreation Department for an updated schedule of concerts.

For further information on any Recreation Department programs, please contact (609) 448-0539, x3. The Recreation Department is also looking for volunteers, ideas for new programs, activities, and trips. Please let us know what you would like to see offered to our community! ■



Egg Strata



This recipe was first used for a Christmas Brunch for the family. It was a success, so I used it often. Then our daughter and her husband bought a nine room *Bed & Breakfast* in Medford, NJ. Jim looked forward to making breakfast for his guests. I gave him this recipe and he used it and then started adding his special touches. It was always a hit, served with fresh fruit cup and homemade wheat bread. He has given the recipe to be used in a B&B cookbook.

- | | |
|-----------------------------|-------------------------------------|
| 1/2 lb. Sausage | 3 c. milk |
| 1 onion | 1/2 c. sour cream |
| 1 1/2 c. mushrooms | 1 tabl. Mustard |
| 4 c. cubed wheat bread | 1/2 teas. seasoning salt or regular |
| 8 oz. grated cheddar cheese | 1/8 teas. pepper |
| 9 eggs | 1 teas. paprika |

This scrumptious egg dish can be prepared the night before, and smells heavenly when baked the next morning. We usually serve it with fruit salad and muffins.

Brown and crumble sausage. Sauté mushrooms and onions. Oil bottom of a 9" x 13" pan. Spread bread cubes evenly in pan, layer sausage, mushroom and onion over bread. Sprinkle the grated cheese over mixture in pan.

In medium mixing bowl, whisk eggs, milk, sour cream, mustard, salt, and pepper until mixture is smooth. Pour into baking pan, over the bread/sausage/cheese layers. Let it sit overnight in refrigerator. Bake in 350 degrees oven for 60 minutes, until browned and eggs are set. Let set for 10 min. before cutting into squares and serving.

Notes: Slightly stale, heavier bread works best. Better quality cheese is best for this recipe because it is less watery when baked. Occasionally we skip the sausage and add another vegetable.

Will feed 6 to 10 people.

The subject of last month's column was how to avoid indoor lightning dangers. Since that column was published, area newspapers have reported that lightning hit a barn in Hopewell Township causing a fire that burned it to the ground. All the contents of the barn were destroyed. Lightning hit a South Jersey teenager while the 14-year old walked outside on a sidewalk in Cherry Hill during a thunderstorm. Two men in Essex County, one 44-years old and the other 50, were struck by lightning when they sought shelter from a thunderstorm under a tree. It's wise to be extremely cautious when it comes to lightning, whether you're indoors or out.

Never seek shelter under a single tree during a thunderstorm. Try to get inside a building or car (soft-topped convertibles and other soft-topped vehicles are not safe). If you can't make it to one of these safer havens, do not hold your golf club in the air cursing the gods. Get into a crouched position with your feet together. By doing this, you will be getting yourself low and keeping as much of your body as practical from contacting the ground. This strategy is not safe. It is a last resort. Before you find yourself outside in a thunderstorm, please check this NOAA web site <http://www.lightningsafety.noaa.gov/outdoors.htm> You'll find some good tips for protecting yourself and

your group outside during a thunderstorm.

May was a very dry month in Roosevelt. We had only 1.24 inches of rain. Normal is 4.42 inches. The average temperature for the month was 63.7 degrees. That's 3.4 degrees above normal. The first day in Roosevelt with a high of 90-degrees or greater was May 31, when the temperature topped out at 91.2 degrees.

You may have noticed that the Weather Chart that accompanies the Weather Almanac column was missing in the June Bulletin. The fact that this publication so rarely makes this kind of error attests to the dedication, skill and attention to detail of all the volunteers that produce the *Bulletin*. Please accept our apology and forgive our delay in presenting the chart. You will find the charts from April 15 to June 15 following this column.

Weather Word

Heat stroke is a form of hyperthermia (abnormally elevated body temperature) with accompanying physical and neurological symptoms. Unlike heat cramps and heat exhaustion, two less-severe forms of hyperthermia, heat stroke is a true medical emergency that can be fatal if not properly and promptly treated. Source: WebMD

Keep cool. Have a safe and happy summer. ■

April 15 - May 15, 2007

| Day | High | Low | Avg | Precip | Degree Days |
|----------------------------|------|------|-------------|--------|-------------|
| 15 | 57.2 | 40.8 | 49.0 | 1.10 | 16.0 |
| 16 | 55.0 | 36.0 | 45.5 | 4.07 | 19.5 |
| 17 | 54.1 | 39.4 | 46.8 | 0.50 | 18.3 |
| 18 | 54.0 | 41.7 | 47.9 | 0.03 | 17.2 |
| 19 | 58.5 | 44.1 | 51.3 | 0.07 | 13.7 |
| 20 | 69.3 | 36.7 | 53.0 | 0.00 | 12.0 |
| 21 | 73.4 | 36.9 | 55.2 | 0.00 | 9.8 |
| 22 | 77.4 | 42.8 | 60.1 | 0.00 | 4.9 |
| 23 | 82.8 | 50.4 | 66.6 | 0.00 | 0.0 |
| 24 | 79.2 | 60.6 | 69.9 | 0.00 | 0.0 |
| 25 | 72.0 | 46.0 | 59.0 | 0.00 | 6.0 |
| 26 | 63.3 | 46.6 | 55.0 | 0.00 | 10.1 |
| 27 | 61.5 | 49.3 | 55.4 | 0.50 | 9.6 |
| 28 | 68.0 | 52.3 | 60.2 | 1.15 | 4.9 |
| 29 | 70.0 | 52.0 | 61.0 | 0.01 | 4.0 |
| 30 | 79.8 | 47.5 | 63.7 | 0.03 | 1.4 |
| 1 | 68.0 | 49.0 | 58.5 | 0.09 | 6.5 |
| 2 | 70.0 | 51.0 | 60.5 | 0.01 | 4.5 |
| 3 | 68.0 | 42.3 | 55.2 | 0.00 | 9.9 |
| 4 | 70.0 | 41.4 | 55.7 | 0.00 | 9.3 |
| 5 | 71.8 | 41.0 | 56.4 | 0.00 | 8.6 |
| 6 | 61.7 | 47.7 | 54.7 | 0.00 | 10.3 |
| 7 | 64.6 | 36.1 | 50.4 | 0.00 | 14.7 |
| 8 | 74.1 | 37.6 | 55.9 | 0.00 | 9.2 |
| 9 | 81.3 | 52.0 | 66.7 | 0.00 | 0.0 |
| 10 | 79.0 | 63.3 | 71.2 | 0.00 | 0.0 |
| 11 | 80.4 | 60.6 | 70.5 | 0.00 | 0.0 |
| 12 | 77.0 | 57.2 | 67.1 | 0.00 | 0.0 |
| 13 | 69.3 | 51.3 | 60.3 | 0.50 | 4.7 |
| 14 | 70.9 | 38.8 | 54.9 | 0.00 | 10.2 |
| 15 | 79.9 | 51.8 | 65.9 | 0.00 | 0.0 |
| Total Precipitation | | | 8.02 | | |
| Total Degree Days | | | 34.9 | | |

May 15 - June 15, 2007

| Day | High | Low | Avg | Precip |
|----------------------------|------|------|-------------|--------|
| 15 | 79.9 | 51.8 | 65.9 | 0.00 |
| 16 | 85.3 | 62.4 | 73.9 | 0.00 |
| 17 | 73.2 | 55.2 | 64.2 | 0.35 |
| 18 | 61.9 | 50.0 | 56.0 | 0.00 |
| 19 | 65.7 | 45.5 | 55.6 | 0.00 |
| 20 | 74.8 | 51.3 | 63.1 | 0.05 |
| 21 | 70.2 | 50.5 | 60.4 | 0.05 |
| 22 | 74.5 | 44.1 | 59.3 | 0.00 |
| 23 | 77.5 | 50.4 | 64.0 | 0.00 |
| 24 | 82.0 | 53.1 | 67.6 | 0.00 |
| 25 | 88.0 | 56.0 | 72.0 | 0.00 |
| 26 | 88.5 | 62.0 | 75.3 | 0.00 |
| 27 | 87.0 | 63.0 | 75.0 | 0.19 |
| 28 | 81.0 | 63.0 | 72.0 | 0.00 |
| 29 | 80.0 | 56.0 | 68.0 | 0.00 |
| 30 | 84.7 | 52.3 | 68.5 | 0.00 |
| 31 | 91.2 | 61.0 | 76.1 | 0.00 |
| 1 | 87.3 | 63.7 | 75.5 | 0.17 |
| 2 | 87.1 | 63.5 | 75.3 | 0.30 |
| 3 | 80.4 | 63.5 | 72.0 | 0.00 |
| 4 | 73.2 | 62.4 | 67.8 | 1.30 |
| 5 | 82.9 | 63.7 | 73.3 | 0.38 |
| 6 | 73.6 | 58.3 | 66.0 | 0.00 |
| 7 | 78.3 | 48.4 | 63.4 | 0.00 |
| 8 | 87.4 | 59.5 | 73.5 | 0.00 |
| 9 | 86.7 | 63.9 | 75.3 | 0.00 |
| 10 | 75.7 | 63.0 | 69.4 | 0.00 |
| 11 | 83.8 | 61.3 | 72.6 | 0.00 |
| 12 | 84.9 | 63.1 | 74.0 | 0.30 |
| 13 | 73.2 | 59.0 | 66.1 | 0.18 |
| 14 | 66.4 | 54.7 | 60.6 | 0.10 |
| 15 | 75.6 | 56.3 | 66.0 | 0.00 |
| Total Precipitation | | | 8.02 | |

ROOSEVELT ARTS PROJECT

2007 - 2008 Season

Saturday, September 8, 2007, at 8 p.m. at the Borough Hall.

AN EVENING OF ACOUSTIC BLUES

The Jo Wymer Trio with Roosevelt's Mark McCusker playing original acoustic blues and indie music.

Saturday, October 20, 2007, 8 p.m. at the Borough Hall.

THE ART OF TAXIDERMY with David Schwendeman

Saturday, November 10, 2007, 5-8 p.m. reception, 8 p.m. concert at the Landau Studio, 30 Lake Drive.
Sunday, November 11, 2007, art exhibit continues, 1-3 p.m.

ART EXHIBIT AND DAVID BRAHINSKY CONCERT

Saturday, December 8, 2007, Opening, at 1-5 p.m. reception
Sunday, December 9, 2007, art exhibit continues, 1-5 p.m., also December 15th, 16th, 22nd and 23rd

SELECTIONS OF ROBERT MUELLER'S ART

Saturday, January 19, 2008, at 8 p.m. at the Borough Hall

OPEN MIC CAFE

Saturday, February 9, 2008, at 8 p.m. at the Borough Hall.

THE ROOSEVELT POETS

Saturday, March 15, 2008, at 8 p.m. at the Borough Hall.

ALAN MALLACH PERFORMS PIANO MUSIC OF THE FRENCH ROMANTIC ERA

Saturday, April 12, 2008, at 8 p.m. at the Borough Hall.

JERSEY HOMESTEADS: AN ARCHITECTURAL EXPERIMENT **presented by Ben Johnson**

Friday, April 25, 2008, 8 p.m. at the Borough Hall.

Saturday, April 26, 2008, 8 p.m. at the Borough Hall.

THE ROOSEVELT STRING BAND

Saturday, May 17, 2008, at 8 p.m. at the Borough Hall.

DIGITAL ART IN UNEXPECTED PLACES **with Brad Garton and Wiska Radkiewicz**

Voluntary Contribution:

For most events \$5 per adult, for the String Band \$10 per adult, \$5 for seniors and children.

Visit RAP's webpage at <http://music.columbia.edu/roosevelt>. Use the link at the top of the page to sign up for our e-mail list. For further information call Robin Gould at (609) 448-4616. ■

SUPPORTERS AND CONTRIBUTORS

2006 - 2007

Contributions received after June 19 will appear in the next *Bulletin*.

| | | |
|-------------------------------------|---------------------------------------|------------------------------|
| Susan Schwartz & Jim Alt | Judith & Edward Goetzmann | Elizabeth & Gregg Possiel |
| Louise Anish & Family | Eitan & Karyn Grunwald | Bill Presuti |
| Aaron Ashkenazy | Lorraine & Tim Hartley | Michael & Peach Pryzchocki |
| Barbara & Robert Atwood | James Hayden | Silvia & Calden Raines, Jr. |
| Carol Watchler & Ann Baker | Anne Hayden | Diane & Claude Rocchia |
| Louise Baranowitz | Al Hepner (In memory of Freda Hepner) | Marguerite Rosenthal |
| Helen & Leon Barth | Constance & David Herrstrom | Mary Ann Rossi |
| Miriam Bell | Michele & Leonard Hillis | Clare & Leonard Sacharoff |
| Naomi & David Brahinsky | Cynthia Imbrie | Ruth & Milton Sadovsky |
| Charlotte & Ota Bondy | Sheila & Phillip Jaeger | Ruth Schwartz |
| David Burdick | Anna & Ben Johnson | Helen Seitz |
| Jacqueline A. Carpenter | Florrie & Herb Johnson | Abby Shahn |
| Tristan Herrstrom & Scott Carpenter | Susan Carol Jones | Jean & Jonathan Shahn |
| Dolores & Howard Chasan | Ann & Bahiru Kassahun | Lucretia & Sanford Silverman |
| Maureen & Robert Clark | Jane & Michael Kiersnowsky | Betty Sinha |
| Susan & Robb Clyne | Diana Klein | Judy Stryker |
| June & Bill Counterman | Koffler Family | Emily & Stephen Taylor |
| Elise & Paul Cousineau | Kosa Family | Marilyn & Michael Ticktin |
| Ezio Criglia | Lynn Lawson & Neil Persh | Amy & Steven Tremper |
| Gail Hunton & Wieslaw Czyzewski | Betty Leech | Bess Tremper |
| Janis & Joseph Datz | Claudia Luongo | Mary & Rod Tulloss |
| Deborah Daub | Mary Macher | The Vasseurs |
| Janice Fine & David Donnelly | Robin Gould & Alan Mallach | Laura Vigiano |
| M.K. Drury | Susanne Margolis | Marilyn Magnes & Peter Vince |
| Frances Duckett | Manuela & Mark McCusker | Larissa Bondy & Eric Vuole |
| Virginia North Edwards | Judith & Kevin McNally | Alexandra Bonfonte Warren |
| Lottie Sackowitz-Eisner | Pat & Edwin Moser | The Warner Family |
| Shan & Bert Ellentuck | Diana & Robert Mueller | Nancy & Ralph Warnick |
| Irma & Louis Esakoff | Teri Nachtman | Judith & Robert Weinberg |
| Lynn & Melvin Fishman | Judith & Norman Nahmias | Carol & Joseph Weiner |
| Ellen & Robert Francis | Ng Family | Elizabeth Weiner |
| Sadie & Joseph Fraschilla | Jane & John Ord | Paula & Anthony Wisowaty |
| Sylvia Gale | Laramie Palmer | Zohora Family |
| Joline Gallegor | Shari Payson | Judith & Mark Zuckerman |
| The Garton Family | Eleanor Pedersen | |
| Rosa Giletti | Maria del Piano | |

BUSINESS SPONSORS

The Bulletin publishes free-of-charge public information listings from Roosevelt residents and business, and from those in the immediate vicinity with ties to Roosevelt. Write: Roosevelt Borough *Bulletin*, Box 221, Roosevelt, NJ 08555. Contributions are appreciated and are tax-deductible (suggested: \$40.00/year, \$50.00 if over 5 lines.) Deadline is the 15th of each month.

AUTOMOBILE SERVICING

COMPACT KARS

3 Trenton Lakewood Road,
Clarksburg, NJ 08510
Complete Mechanical & Auto Collision
Repairs/24Hr. Towing/Select Used Cars
609-259-6373

LANE TIRE CENTER

Complete Auto Care Center
All Work Guaranteed/Foreign & Domestic
387 Mercer St., Hightstown
448-9500

BANK

AMERICA FIRST BANK
The *Bulletin* Bank

HOME IMPROVEMENT CONSTRUCTION, ET AL

COLORBLINDS DESIGN

Interior Design Service
Specialize in Windows
10% Discount to Roosevelt Residents
Nona Sherak 448-2797

GREG DEFOE

Handyman Service

Interior/Exterior Painting
Complete home repairs and renovations
Fully insured

PROMPT RESPONSE GUARANTEED

80 Pine Drive, Roosevelt, NJ 08555
609-448-4883 cell: 609-577-4081
gdefoe123@comcast.net

EAST WINDSOR FLOOR COVERING

We've got your entire floor covering needs
****WOOD**VINYL**TILE**CERAMIC****
Wall-to-Wall Carpets, 888 Area Rugs
Two locations to serve you better
East Windsor Hamilton
609-443-6999 609-890-6111

MICHAEL D. PRYZCHOCKI, GENERAL CONTRACTOR, INC.

Small Job to Total Construction.
Roofing, Additions.
Renovations – Bathroom, Kitchens,
Remodeling – Major and Minor Repairs.
References Available. Fully Insured,
Free Estimates, Certified Contractor.
10% Senior Citizen Discount 448-2180
N.J. Lic. #13VH01307200

ARTHUR R. STINSON CONSTRUCTION

Since 1982 Specializing in Home Addition,
Bathrooms & Kitchens & Finished Basements
Brick & Concrete Patios-Stamped Concrete
Free Estimates State License
448-0154 #13VH00923900
Fax 448-1122 Fully Insured

TOM ORLANDO PLUMBING & HEATING

Master Plumber's License #12179
Fully Insured & Bonded
Total Bathroom Renovation
Sewer Line or Water Service Replacement
Hot Water Boiler Replacement or Repair
Repair Faucets, Toilets, Hose Bibbs, etc.
609-903-6488

SPECIALTIES

R & A PETRILLA

Old books & papers purchased & appraised
(established 1970)
609-426-4999

CUSTOMIZED COMPUTER SERVICES

Virus cleaning, Computer training.
Specializing in home networks to share
your internet connection, printers, files
with 2 or more computers.
Wired and wireless networks installed.
Roosevelt home page space and design
donated, see at www.web2sons.org.
Bob Francis
Contact sales@web2sons.com or
call 609-448-4064.

BH SKY ASSOCIATES

BUSINESS CONSULTING

Increase YOUR Revenues by doing
business with the government!
Call Michelle Hermelee at 609-632-0338 or
visit www.bhskyassociates.com
for more information!

PET SITTER

Fully Insured
609-448-8682
Discount to Roosevelt Residents
Jamyie Witherspoon

FAST ACTION PLUMBING

Sewer and Drain Cleaning
"We will Beat any Written Estimate"
Master Plumbers License #10359
Call (732) 766-8791

MUSIC

GUITAR INSTRUCTION

Age 7 & up
David Brahinsky: 443-1898
STORYTELLING & FOLK SINGING
AVAILABLE FOR PARTIES.

PERSONAL CARE

TAI CHI CLASSES

Relaxation & Balance for all ages
Wednesday morning – 9 to 11 a.m.
Thursday night – 7 to 8 p.m.
At the Borough Hall
Call June Counterman 448-3182

HOMETOWNE APPRAISAL, LLC

Residential & Commercial Real Estate
Appraisals

www.hometowneappraisals.com

1-877-481-6956

Over ten years experience in Real Estate

Ann Marie Boryeskne

Certified Residential Real Estate Appraiser
#42RC00168400

Serving the entire Garden State
(609) 371-8155 office
(609) 249-2486 fax

Htappraisals@comcast.net

Thinking of Making a Move?

Let the experts at Weichert Realtors help!
Please call

ELIZABETH HUANG MAJORCZYK

Weichert Referral Associates
(800) 937-6777 - Office
(732) 299-6007 - Cell phone

RESTAURANT / TAKEOUT

Mi Rancho (formerly Rossi's)

Deli, Subs, Pizza, Salads,

Columbian & Italian Specialties

1 N. Rochdale Ave., Roosevelt, NJ
Business Hours:

Mon thru Fri – 6 a.m. to 7:30 p.m.

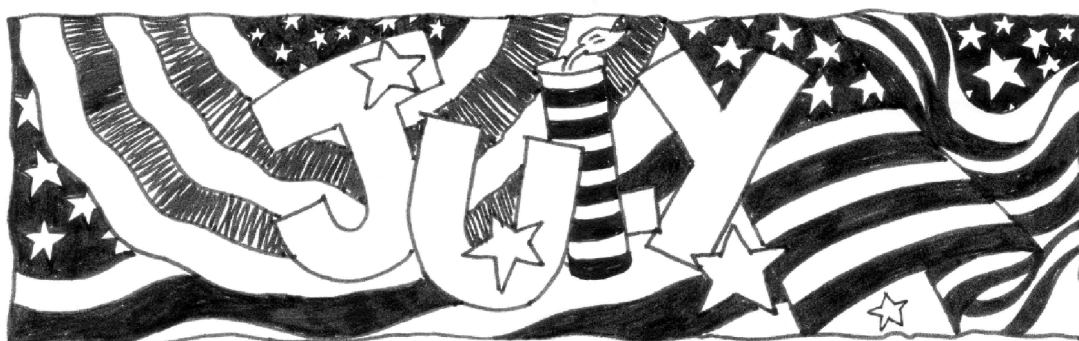
Sat – 6 a.m. to 3 p.m.

Sunday – 10 a.m. to 2 p.m.

We bake our own breads.

Phone Orders: 609-443-5111

Patronize our business
sponsors. Most of them are
our neighbors.



Please send your events and activities to Jane Rothfuss, Box 122, 448-3713 or e-mail: kirkjane@juno.com

July

| | | | | |
|-----------|------|----------|--|-----------------------|
| 3 | Tues | 12:30 pm | Senior Blood Pressure Check | Boro Hall |
| | | 1 pm | Seniors Meeting Gerry Millar, President | Boro Hall 448-0351 |
| 4 | Wed | | Independence Day Celebration | |
| 8 | Sun | 10 am | First Aid Squad Training Jack Rindt 448-9475 (Call 9 am - 6 pm) | Boro Hall |
| 9 | Mon | 7 pm | Council Action Meeting Beth Battel, Mayor | Boro Hall 443-7701 |
| 10 | Tues | 7:30 pm | Planning Board Meeting Jane Rothfuss, Chair | Boro Hall 448-3713 |
| 11 | Wed | | ♻️ RECYCLE | |
| | | 7:30 pm | Planning Board Meeting Jane Rothfuss, Chair | Boro Hall 448-3713 |
| 17 | Tues | 7:30 pm | First Aid Squad Business Mtg Jack Rindt | Boro Hall 448-9475 |
| 18 | Wed | 7:30 pm | Environmtl Com. Mtg Dave Schwendeman, Chair | Boro Hall 443-6204 |
| 23 | Mon | 7 pm | Council Action Meeting Beth Battel, Mayor | Boro Hall 443-7701 |
| 25 | Wed | | ♻️ RECYCLE | |

August Preview

| | | | | |
|-----------|------|----------|--|-----------------------|
| 7 | Tues | 12:30 pm | Senior Blood Pressure Check | Boro Hall |
| | | 1 pm | Seniors Meeting Gerry Millar, President | Boro Hall 448-0351 |
| 8 | Wed | | ♻️ RECYCLE | |
| 13 | Mon | 7 pm | Council Action Meeting Beth Battel, Mayor | Boro Hall 443-7701 |
| 14 | Tues | 7:30 pm | Planning Board Meeting Jane Rothfuss, Chair | Boro Hall 448-3713 |
| 22 | Wed | | ♻️ RECYCLE | |
| 27 | Mon | 7 pm | Council Action Meeting Beth Battel, Mayor | Boro Hall 443-7701 |

Roosevelt Borough Bulletin
P.O. Box 221
Roosevelt, NJ 08555-0221

NON-PROFIT ORG.
U.S. Postage
PAID
Roosevelt, NJ
Permit No, 6

PRSRT STD
Postal Customer
Roosevelt, NJ 08555-0221