

Bulletin

Volume 38 Number 2

October 2014

BOROUGH COUNCIL NEWS

By Michael Ticktin

Council Hears Favorable Testimony Concerning Proposed Land Swap; County Engineering Department Working with the Borough to Improve Safety at Clarksburg Road-South Valley Road Intersection; Bulk Trash Pick-up Set for October 14

At its meeting of September 8, the Borough Council conducted a public hearing concerning the proposed exchange of 2.56 acres of Borough-owned, Green Acres-restricted, land along Clarksburg Road east of Spruce Lane for 12.8 acres of woodlands behind the houses on the north side of Lake Drive east of South Valley Road that is owned by Beth Battel. (Since Ms. Battel is the Mayor, she does not participate in any Council discussions of this issue and therefore left the table and handed the gavel to Council President Michelle Hermelee, who in turn gave it to Board Attorney Richard Shaklee.) Since the purpose of the Borough's acquisition of the 2.56 acre tract, as explained by Mr. Shaklee, was to preserve the farmland viewshed at the southeastern entrance to Roosevelt, that tract was for many years leased to Ms. Battel and her predecessors in title on condition that it be used as pastureland. If the land swap is approved by the New Jersey Department of Environmental Protection (DEP), it will be legally restricted so that it will continue to be used only for agricultural purposes. The purpose of the hearing was to elicit public comments, as required by DEP rules. The proposed exchange does not involve payment of cash to either party.

Borough Engineer Carmela identified the following advantages to the Borough of going forward with the

proposed exchange: (1) The green belt, which is a major feature of the Borough's historic Garden City design would be enhanced by preserving the 2.56 acre as it is and adding preserved public land behind the houses on the north side of Lake Drive, the only group of houses now lacking a border with preserved land; (2) Preservation of the farm viewshed would maintain consistency with the goals of the Monmouth County Scenic Byways program; (3) If the 2.56 acre tract is not maintained as part of the farm, as it would not be if the land swap were not approved and DEP would not allow continued leasing, as it has indicated it would not, it would become overgrown and block sight lines at the intersection of Spruce Lane and Clarksburg Road, thus creating a traffic hazard; and (4) The 12.8 acre parcel that would be accepted in exchange for the 2.56 acre parcel provides habitat for various threatened species and is otherwise of significant conservation benefit.

Mr. Shaklee then opened the floor for comments from the public. Gina Aurichio, the owner of the adjoining property just over the municipal border in Millstone, expressed strong support for the proposed exchange, saying that the farm viewscape was what most attracted her family to purchase their home. She characterized it as "breathtaking." She noted that, with the property fenced, it

Continued on Page 3

INSIDE THIS ISSUE

From the Mayor	3	Roosevelt Public School	10
Board of Education	6	Roosevelt Fire Department	12
Roosevelt Arts Project	8	Bulletin Contributors	14

ANNOUNCEMENTS

Welcome to the 38th edition of the Roosevelt Borough Bulletin. There will be ten issues running from September 2014 through July, 2015. We will not publish in January and August 2015.

We welcome your emailed submissions for articles, letters, poems, artwork, and other items of interest. Please send your submissions and inquiries to Rick Pressler (rooseveltbulletin submissions@gmail.com). Non-digital submissions will be accommodated to the best of our ability, but we cannot guarantee publication. Inclusion of all items is subject to the availability of space and the editorial judgment of our Editor. Items must be received by the 15th of the month to be included in the next issue.

We will do our best to make the Bulletin both informative and interesting with the help of our devoted writers and production people.

If you want to CONTACT THE BULLETIN, please look at our masthead to the right with our address as shown.



Please report any bear sightings to:
State Bureau of Wildlife Management
Kim Tinnes, Wildlife Control
609-259-7955

The MEALS ON WHEELS program delivers prepared meals to Roosevelt seniors who need this assistance. Though meals are provided free of charge to recipients, the cost to the program is \$2.50 per meal. Donations to help cover these costs may be sent to Interfaith Neighbors, 810 Fourth Avenue, Asbury Park, NJ 07712.

SENIOR CITIZENS: There is a S.C.A.T. bus provided by Monmouth County Division of Transportation that comes to Roosevelt on Wednesday mornings at 9:00 a.m. and will take you shopping to ShopRite in East Windsor. The bus will pick you up at your home, you spend 1 ½ hours shopping, and the bus will take you home and leave your groceries at your door. There is no charge to you for this service.

If you wish to go, you must call the S.C.A.T. bus Tuesday no later than 3:00 p.m. at 732-431-6485 and press 1. Give them your name, address, and the town you are from, and your interest in going on Wednesday, the next day.

An archive of all past issues of the Bulletin can be found online at www.mazicmusic.com/rbb.htm, courtesy of Mark Zuckerman. Current and recent issues can also be found online at www.boroughbulletin.org, the official website of the Borough Bulletin that is maintained by Bulletin Trustee Bob Francis. To have the Bulletin sent to you by email, please go to www.boroughbulletin.org and press the "Push Here to Sign Up for Bulletin" button.

The *Roosevelt Borough Bulletin* is published monthly, except August and January by Roosevelt Borough Bulletin, Inc. P.O. Box 221, Roosevelt, NJ 08555

BOARD OF TRUSTEES

Bob Clark, Bob Francis,
Rick Pressler, Kevin McNally,
Michael Ticktin

EDITOR

Michael Ticktin

MANAGING EDITOR

Rick Pressler

TREASURER

Kevin McNally

CONTRIBUTING WRITERS

Beth Battel	Mary Robinson Cohen
Ron Filepp	April Suk
Jack Rindt	Michael Ticktin

BUSINESS

Kevin McNally

GRAPHIC DESIGN

Hope Pressler

WEB MASTER

Bob Francis

Roosevelt Borough Bulletin, Inc., is a New Jersey Non-Profit Corporation



From the Mayor

Dear Neighbors,

By Elsbeth Battel

Thank you to everyone who contributed their time and energy to help with the Litter Pick-Up in October. Keeping our neighborhoods clean benefits every resident and makes Roosevelt worthy of the pride we take in our town.

Now for a little unofficial burro business, namely Rocky Bottom. He is the little burro who lives in the front paddock of the farm on Lake Dr. Rocky was born July 15th 2013 which makes him a little over a year just now. His mother and his father both reside on the farm, as does his little brother Oberon who was born this August.

People have asked about Rocky so here is his story: He is of the breed known as Sicilian Donkeys. They were bred down from full size (standard) donkeys to serve the purpose of guardians of the sheep flocks in the hills of Sicily and Italy. While being very friendly with people and other domestic animals, they will aggressively chase wolves and dogs away from the sheep and their raucous braying alerts the shepherd of the potential danger. Nowadays Sicilian Donkeys are bred as companions for horses and as pets. Rocky enjoys the visits and attention from his friends in town so don't be shy about visiting him- just be careful of little fingers poking through the fence because he could mistake a finger for a carrot.

Enjoy the beautiful fall; it's a great time for a hike in the woods!

Beth

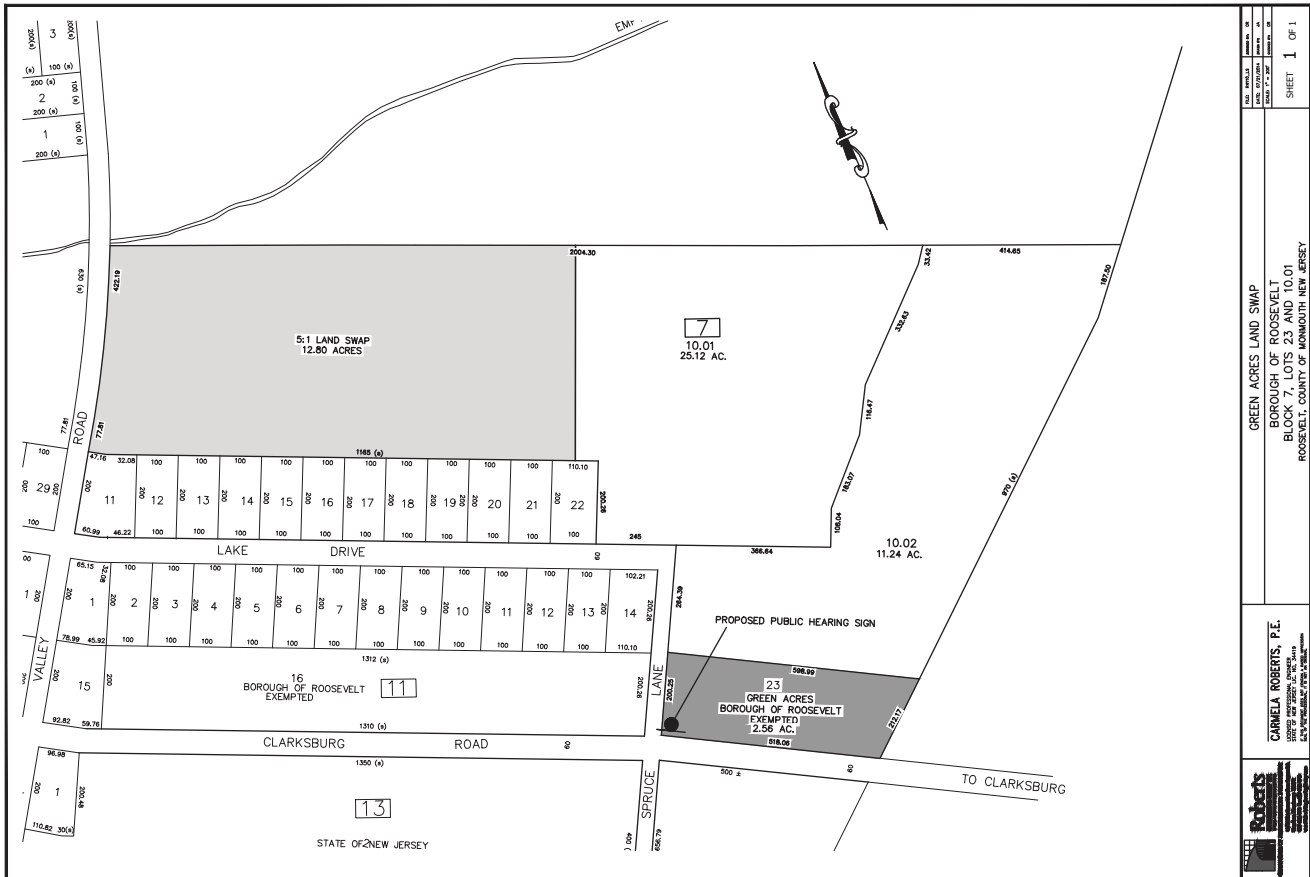
BOROUGH COUNCIL NEWS (CONT'D)

Continued from Page 1

is well maintained by the owner of the farm, but that it had begun to be overgrown during a period in which DEP had required the fence to be moved and this had contributed to an accident. It was her opinion that the Borough would be foolish not to take advantage of the opportunity to make this exchange. Bill and June Counterman, whose home is two houses down from the farm on Lake Drive, both

expressed support for the exchange and for the opportunity it presented to the Borough.

The hearing having been held, and a transcript prepared, Mr. Shaklee's office was then able to move forward with the DEP approval process. In order for the exchange to be effected, the approval of both DEP and the State House Commission will be required.



Continued from Page 3

Also at the September 8 meeting, the Council passed on first reading (meaning it was introduced and approved for advertising and consideration after public hearing at a subsequent meeting) an amendatory ordinance, introduced by Councilman Jeff Ellentuck, providing that any zoning complaint filed with the zoning officer by another public official must be in writing. The zoning ordinance had previously been amended to allow the zoning officer to take enforcement action without first having to receive a written complaint, but this further amendment would make clear any involvement by another public official, which might be relevant in the event of any appeal to the Planning Board, since a Planning Board member who had any previous involvement in the matter would not be able to take part in hearing any appeal. The Council also passed resolutions affirming the Borough's civil rights policy, accepting the 2013 audit report, authorizing a payment for improvements to Nurko Road, authorizing execution of a deed of temporary easement allowing continued use of the aforementioned 2.56 acre tract on Clarksburg Road for agricultural purposes until the exchange is completed (Mayor Battel recusing herself on that vote), acknowledging the Hurricane

Sandy Recognition Plaque and Safety Award received from the Monmouth County Municipal Joint Insurance Fund's Executive Safety Committee, and authorizing issuance of a raffles license to the Roosevelt Volunteer Fire Company.

At the September 22 meeting, Councilman Michael Ticktin reported on his meeting with traffic engineers from the Monmouth County Public Works and Engineering Department concerning the hazardous intersection of South Valley Road and Clarksburg Road (County Route 571) and a follow-up letter that he had received. In that letter, the County Engineer stated that his office had scheduled a traffic investigation relevant to sight line concerns at the intersection, including site reconnaissance and review of available relevant information, sight distance measurements, review of existing traffic signs and striping, review of crash history and collection of traffic data, including volumes and vehicle speed. In the meantime, the County Engineer recommended that the Borough take necessary action to make sure that shrubbery and other vegetation is maintained to a height of not more than 30 inches in the sight triangle, as defined by ordinance, and that any plantings that are in the right-of-way of Route 571, measured approximately 15 feet from the edge of the pavement, be cut to a height not exceeding 30 inches. Councilman

Tom Curry, chairman of Public Works, said that he would arrange for the removal of a tree that is in the right-of-way of both roadways.

Also at the September 22 meeting, the Council adopted a resolution amending the Personnel Policies and Procedures and Employee Handbook and approved a motion authorizing the municipal engineer to assist the Fire Department with a grant application, approved the purchase of three laptop computers for use by municipal officials, and approved the use of the Borough Hall for a Fire Department pancake breakfast on November 15 and for "chair chi" classes on Tuesdays from 11 to 12 a.m. beginning in October. "Chair chi" is a form of Chinese tai chi exercise that can be done while seated by someone who would have difficulty doing regular tai chi.

The Borough's semi-annual bulk trash pick-up will be on Tuesday, October 14. Any questions about whether items are acceptable or not should be addressed to the Borough Clerk at 448-0439, Extension 4.



THE ROOSEVELT BOROUGH BULLETIN

is distributed free-of-charge to Roosevelt residents. We look forward to and appreciate contributions which are very much needed to keep our publication going. Contributions are tax deductible

PLEASE NOTE: Due to postal regulations we can only ask for "donations" rather than "subscriptions" from out-of-towners who wish to receive the *BULLETIN*.

We will be pleased to continue sending them the *BULLETIN* when we receive their contributions which, of course, can be for the same amount (or more) as in the past.

In order to save on postage, we would encourage non-residents who have computers to subscribe to the *Bulletin* online at www.boroughbulletin.org in lieu of receiving a paper copy. Donations from readers, wherever they may be, and regardless of the medium in which they read the *Bulletin*, are still very much welcome, since we could not publish without your support.

PLEASE SEND IN A CONTRIBUTION TODAY. ***WE NEED YOUR SUPPORT.***

Please send contributions to:

Roosevelt Borough Bulletin, Inc., P.O. Box 221, Roosevelt, NJ 08555

Roosevelt Public School Education Foundation Holds Fall Fundraiser

On Friday, September 5, the Roosevelt Public School Education Foundation (RPSEF) held a very successful Wine and Desserts Fundraiser at the home of Maria Del Piano, Secretary of RPSEF. The wine and desserts were enjoyed by the many people who came out in support of the non-profit foundation, which has as its goal providing resources for students' programs and materials at RPS that cannot be funded within the school budget.



Some attendees, including Naomi Brahinsky, were the lucky recipients of a pie, donated by A & M Farm and Garden Center in Robbinsville, or a donated bottle of wine.

Our next event is a mushroom walk/talk planned for October so that you can learn more about the colorful fungi that appear around Roosevelt and the sandy Pine Barrens to our southeast.

For more information and to give your time or a donation to the Roosevelt Public School Education Foundation, you are invited to view our new website at rpsef.org.

Thank you again to Nhya Gordon of Roosevelt for designing our beautiful dragon logo, which appears on the website.



Roosevelt Public School Education Foundation

Monmouth County Board of Health

By June Counterman

I visited the Monmouth County Board of Health meeting on Tuesday September 16. It was good to see them again as I was a charter member of the board and left them early this year. I found that they still have two openings on this volunteer board. They currently have no representatives from western Monmouth County.

I encourage anyone interested in serving on the Monmouth County Board of Health to contact John P. Curley of the Board of Chosen Freeholders at 732-683-8838. The Board of Health meets monthly every third Tuesday at 7 p.m. in Freehold.

It is very rewarding to serve our county at this level.

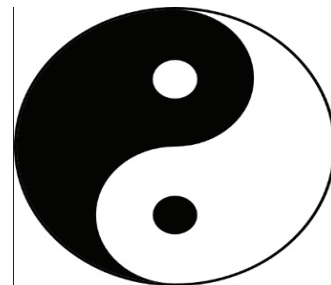
Roosevelt Seniors

**Come to the Roosevelt Senior Meeting
at the Roosevelt Boro Hall
The meeting will start at 12:30pm
June Counterman will demonstrate & lead us in
Chair Chi Exercises**

Join us for a fun afternoon

We will see you there.

Bring ideas for October Event



Bring ideas for October Event



Food, Drink Coffee, & Fun



RECYCLING DATES
October 8, 22
November 5, 19

ZONING PERMITS
Tuesdays 4 – 6 PM

STATE PERMITS
Wednesdays 1 – 3

BOROUGH HOUSING INSPECTIONS
Tuesdays 5 – 6 PM,
Borough Hall

**When: Tuesday, October 7, 2014
Where: Boro Hall
Time: 12:30pm
What: Chair Chi by June Counterman**

Breaking Down the Referendum

On the November 4, 2014 ballot, registered voters will be asked to cast their ballot on the district's proposed capital improvement project, which will look to upgrade/replace portions of the school roof and coping, as well as remove and replace the exterior stucco system on the school building, which are causing health and safety concerns at the school and could jeopardize the overall stability of the school structure. Residents will be asked to vote on \$506,494 to fund the district's portion of the proposed capital improvement project. If this amount is approved by voters, the district will receive a grant from the Department of Education in the amount of \$337,662, or 40% of the total cost of the project, which is \$844,156.

Polls are open from 6 a.m. to 8 p.m. at Borough Hall on November 4, 2014. For additional information regarding the proposed Referendum, please email RPSBOE@gmail.com or consider attending the next Board of Education meeting on October 23rd at 7:30 p.m. at the school. There, a formal presentation will be made to the public by our financial advisors and architects.

The official wording of the November 4th ballot question is:

PROPOSAL

The Board of Education of the Borough of Roosevelt in the County of Monmouth, New Jersey (the "Board of Education"), is authorized to: (1) undertake a school facilities upgrade program at the Roosevelt Public School, consisting of replacing (a) the exterior stucco finish and (b) the existing roof system, (2) appropriate and spend for such projects an amount not to exceed \$844,156, (3) accept State grants for said purposes in an amount not to

exceed \$337,662, and (4) issue bonds of the Board of Education for said purposes in an amount not to exceed \$506,494 and to issue additional bonds in an amount not exceeding the State grant amount to temporarily finance the State grant for cash flow purposes, as necessary, pending receipt of the State grant.

The final eligible costs of the projects approved by the Commissioner of Education are \$844,156. All costs of the Project are eligible costs. The Board of Education may transfer costs among the projects.

Voting for the Ballot Question means:

- Bonds of \$506,494 to conduct repairs/replacements
- Acceptance of the grant from the state for \$337,662 (40%)
- Cap project costs at maximum of \$844,156
- Projected tax increase of approximately \$15/mo for average Roosevelt house of \$251,000 tax value (Note, the average assessed value of your home differs from that of fair market value. Be sure to check your property tax bill to obtain the value of your home.) The actual net tax will be less than one dollar per month since previous bond payments recently ended.
- A safe and healthy building for our students, teachers, staff, and community

The Hag is astride,
This night for to ride;
The Devill and shee together:
Through thick, and through thin,
Now out, and then in,
Though ne'r so foule be the weather.
from "The Hag" by Robert Herrick

JCP&L Scam Alert

We want to make you aware of a long-running, nationwide utility scam that is again being reported in New Jersey. The scam involves a caller posing as an electric company employee threatening to shut off power unless an immediate payment is made, using a pre-paid debit card such as a Green Dot card.

These pre-paid cards are available at convenience stores and drug stores, and customers can use them to pay bills or add money to online accounts. However, JCP&L does not endorse the use of Green Dot cards as a bill payment method.

If a customer receives a call from someone demanding payment of their electric bill by using a Green Dot card, they are being scammed and should report the crime to local authorities. Although our company representatives sometimes do call customers to remind them that a payment is past due, they explain how a payment can be made using one of the following established payment options:

- Direct Debit Automated Phone Payment: 1-866-569-4770
- Authorized Payment Location: www.firstenergycorp.com/forms/paymentagencies
- Mail

Any customer who has doubts about a call from someone claiming to be from JCP&L, especially one demanding immediate payment, should call JCP&L's customer service number at 1-800-662-3115. For more information, visit www.firstenergycorp.com/paymentoptions.

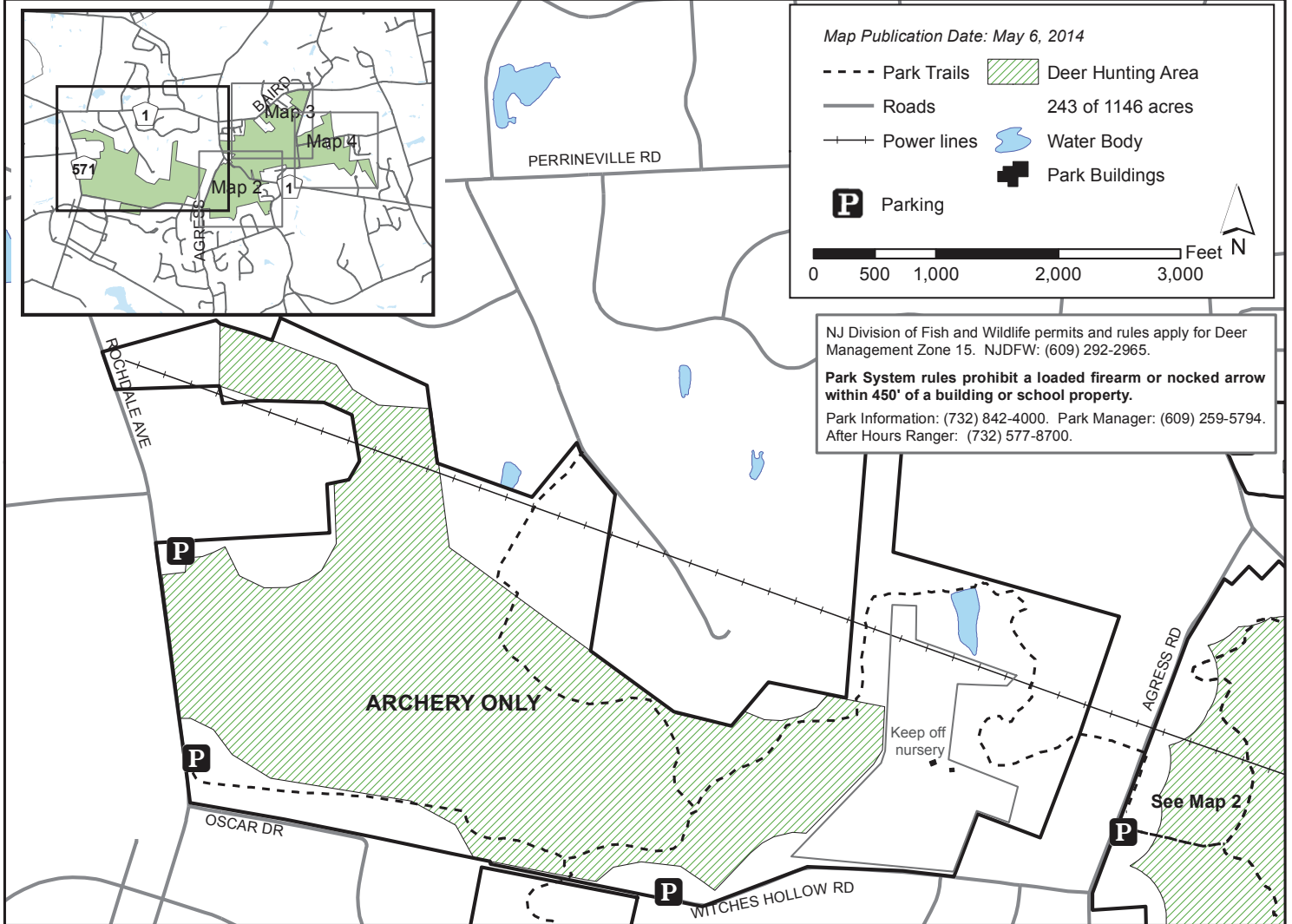
Map of Local Bow Hunting Area

Monmouth County Park System
Deer Hunting Area
Hunting Access Permit Required



Perrineville Lake Park Rochdale Ave Section Roosevelt & Millstone Township Category 1 - Archery Only

NJ Division of Fish and Wildlife
Regulation Set #7, Zone 15
October 1, 2014 - February 21, 2015



Note: Parking in designated lots only. Trails will remain open.

Map 1 of 4

Hunting is permitted in this area by archery only. Questions and comments about the program should be directed to the Park System by telephone at 732-842-4000, ext. 4237; by email at wildlife@monmouth-countyparks.com; or by mail at Monmouth County Park System, Attn: Public Information Office, 805 Newman Springs Road, Lincroft, NJ 07738. In addition, anyone wishing more information, or wishing to report any discharge of weapons other than as permitted by the Park System, can call Park Information (732) 842-4000, the Park Manager (609) 259-4794 or, after hours, the Park Ranger (732) 577-8700.

The Roosevelt Arts Project

DATE	VENUE	EVENT
Saturday, October 18 8:00 PM	Boro Hall	Designs for Roosevelt Roosevelt resident and Rutgers Professor of Landscape Architecture Kate John-Alder had her “Praxis Studio: Open Space Design” class creatively contemplate the history, culture and environment of Roosevelt. Beginning with the creation of a multiple layer timeline, the students had to create a set of imaginative ‘interventions’ to highlight the unique and wonderful character of the town. Spend an evening with Prof. John-Alder, her students, and invited class-speakers and members of the final jury as they show and discuss different visions for Roosevelt’s future.
Saturday, November 8 8:00 PM	Boro Hall	MUSICAL LONDON A piano recital with commentary by Alan Mallach London has been a rich center of musical life for centuries, and over those years has yielded a rich treasure of keyboard music, from the Elizabethan era through the many visitors and adopted sons that enriched its musical life, such as Handel, Clementi and Mendelssohn, to the English composers of the last century. In a program beginning with Elizabethan composers John Bull and William Byrd, and taking us up to 20th century composers like Frederick Delius, Arnold Bax and Benjamin Britten, Mallach will offer a vivid, melodic sample of London’s musical story.
Sunday, November 16 Mural Talk 11:00 AM Studio Tours 12:00 to 5:00 PM	Studios + Roosevelt Public School	Annual Studio Tour and Sale Visit local artists’ studios in our historic New Deal town for a pre-holiday show and sale. Start your tour with a Mural Talk at Roosevelt Public School, view the Ben Shahn Mural and pick up a map of participating artists.
Saturday, December 13 8:00 PM	Assifa Space	“The Blues at Assifa Space” Assifa space at 40 Tamara Dr. in Roosevelt, though small, has the finest acoustics in town. David Brahinsky on vocals and guitar and 2 ringers from out of town, Guy DeRosa on harmonicas and Hank Skalka on bass, will present an evening devoted to the blues of various types and genres.
Saturday, January 17 8:00 PM	Boro Hall	NextGen Music - Techno/DJ/Ambient Roosevelt Musicians Several younger Roosevelt natives are now making their mark in the world as composers-performers working with techno, DJ and chill/ambient music. Come hear what they do and enjoy an evening of exciting new music. Tentatively scheduled: Nicholas Malkin (Afterhours), David Atwood, and Jack Leech (Nurko). Additional ambient music provided by Brad Garton with friends Terry Pender and Karl Fury.
Saturday, February 21 8:00 PM	Assifa Space	Roosevelt Poets Join the Roosevelt poets during the shortest month of the year as they explore the shortest poetic forms from haiku to ghazal to microgram. Find out what the Universe has been hiding all this time!

Voluntary Contribution: For most events \$5 per adult, for the String Band \$10 per adult, \$5 for seniors and children. Visit RAP’s webpage at <http://music.columbia.edu/roosevelt>. Be sure to join our mailing list at <http://www.rooseveltartsproject.org> so that you get the brochure sent to you via email each season and timely reminders of each upcoming event. For further information call Robin Gould at (609) 448-4616.

Why do people move to Roosevelt?

The subject comes up in conversation with some frequency, especially when one is new to town. Since moving here two years ago, I've been curious about the motivation of others, not assuming that my own family's rationale would be echoed. My hope is that our readers will be moved to contribute their own responses (of 200 to 300 words) for inclusion in future issues. But for now, let my own contribution encourage you to pick up your laptop and tap out a few thoughts...

Before moving to Roosevelt, I'd lived in New Jersey for almost 50 years, always in Middlesex County: East Brunswick, New Brunswick, Highland Park, Metuchen—all towns with notable virtues. But a few years ago, my wife Hope and I began a conversation about living differently, finding a more economical and peaceful way to live. We both loved our work and needed to stay close to family, but we realized there were some specific experiences we wanted from a home town—and had not yet been able to find.

We compiled our priorities and rated their relative importance. The list included a strong sense of community; access to open space and trails; good schools; lower housing costs; cultural vitality, and less traffic and congestion. We imagined living closer to nature, arranging our affairs so Hope could stay home with the kids, and just generally living more deliberately. We visited towns across the state, focusing initially up north. Our search led us to Roosevelt—it was closer to family and work and met all our most essential criteria. So logical!

We found the right house (my first reaction: No way—I'm not living in a 70s split level!) and set up shop with the youngest three of our four kids. Our initial impressions about the borough have been borne out: many neighbors have been welcoming and

By Rick Pressler

helpful, there's a palpable culture of inclusiveness, people care about community, and access to nature has become an important part of our lives. (Yesterday my children watched baby snapping turtles emerge from a nest.) People wind up in different places for different reasons...good reasons are no guarantee of good outcomes, but Roosevelt feels like home.

ELECTRONICS RECYCLING

State law now prohibits disposal of computers and TVs with trash. Free drop-off. Program open to all Monmouth County residents, small businesses, and institutions. Limited to one pick-up truckload.

Items accepted:

- Computer cases, CPUs
- Keyboards, Mice
- Monitors, Scanners
- Printers, Cables
- Laptops, Peripherals
- Televisions
- Radios, Cameras
- Telephones
- Copiers, Fax Machines
- VCRs, DVD Players
- Stereo Components

Location:

MILLSTONE TOWNSHIP
 Dept. of Public Works Garage
 Recycling Center
 899 Perrineville Rd.
 Open on Saturday & Sunday
 8:00 a.m. - 1:00 p.m.

For additional sites within Monmouth County, please visit www.visitmonmouth.com/page.aspx-?ID3021

By Ron Filepp

August 2014

Day					Cool'g/Heat'g
	High	Low	Avg Precip		Degree Days
1	86.0	66.4	76.2	0.00	6.2
2	76.6	63.5	70.1	0.37	0.0
3	79.3	63.5	71.4	0.20	1.4
4	85.6	66.4	76.0	0.00	6.0
5	86.9	63.9	75.4	0.00	5.4
6	81.0	63.1	72.1	0.00	2.1
7	81.7	58.5	70.1	0.00	0.1
8	79.9	54.1	67.0	0.00	0.0
9	83.5	56.5	70.0	0.00	0.0
10	84.2	58.6	71.4	0.00	1.4
11	85.6	60.8	73.2	0.00	3.2
12	85.5	65.7	75.6	0.28	5.6
13	83.3	65.5	74.4	0.60	4.4
14	78.3	57.7	68.0	0.05	0.0
15	78.8	53.8	66.3	0.00	0.0
16	78.6	53.6	66.1	0.00	0.0
17	80.1	59.7	69.9	0.00	0.0
18	80.8	55.0	67.9	0.00	0.0
19	83.7	57.0	70.4	0.00	0.3
20	83.5	62.8	73.2	0.00	3.2
21	85.8	62.8	74.3	0.00	4.3
22	79.7	63.1	71.4	0.72	1.4
23	77.7	61.0	69.4	0.00	0.0
24	81.7	59.7	70.7	0.00	0.7
25	81.9	54.5	68.2	0.00	0.0
26	86.9	59.7	73.3	0.00	3.3
27	83.5	59.9	71.7	0.00	1.7
28	78.6	64.8	71.7	0.00	1.7
29	75.6	52.7	64.2	0.00	0.0
30	80.4	53.6	67.0	0.00	0.0
31	88.3	67.3	77.8	0.05	7.8
Totals				2.27	60.2

By Mary Cohen

Welcome Back to School!

I am happy to say that we had a wonderful opening of school and it is delightful to see the joy on all of the children's faces every morning as they assemble to come inside. Our custodian worked hard to make sure that the students and staff had a sparkling building to return to. As I visit classrooms on a daily basis, without exception I see talented teachers, engaged children and that learning has begun in earnest.

We have some new staff members who have joined us this year: Ms. Bell is our school nurse, Ms. Lawson is a Special Education teacher, Ms. Della is our Spanish teacher, Ms. Witlieb has taken on an additional assignment to design our STEAM (Science Technology Engineering Art and Mathematics) program and Ms. Raskin is our new librarian/media specialist. We warmly welcome them to the Roosevelt family.

My back to school message to parents is to please partner with us in educating your children. I am asking parents to send children who are ready to learn, stay in contact with your child's teacher, supervise your child's assignments, monitor the

amount of technology that your child uses or views on a daily basis and above all, read to and with your children every day; together we will help them to achieve academically and foster a lifetime love of learning.

I want to share with the community our good news: on the most recent administration of the New Jersey Assessment of Skills and Knowledge (NJ ASK) 100 percent of our students scored proficient or above on the mathematics portion and 95 percent scored proficient or above on the language arts portion. Our faculty is committed to continuing to use data to drive instruction and engaging in professional development that impacts student achievement – we opened the school year with a day devoted to faculty study of a literacy program.

Roosevelt Public School has a long tradition of our students being creative and flourishing in the arts. This year we will continue to bridge our school with our community: we hope to work closely with RAP

and use the knowledge our staff is gaining through the grant we received from the Foundation for Educational Administration, NJ Principals and Supervisors Association, the Geraldine R. Dodge Foundation and Crayola.

I am looking forward to a wonderful year!



Students in Mr. Santanello's 6th grade class preparing to hang artwork on the 9-11 tree.

There's a Bridge on the Ridge

by Rosalyn M. Klatskin,
September 13, 2014

There's a bridge on the ridge,
That I go to every day.

To say a prayer, or just be there
To while the moments away.

My tender heart will not be touched,
Until G-d shows the way.

I'm proud to be an American,
More than words can say.

From the discovery to explorers,
Wide spaces to be found.

We are steadfast and determined,
As standing strong upon our ground.

Just remember our forefathers' fight for liberty,
Yes, we live in the land of the brave and free.

In G-d we trust, with world peace a must,
We know that for sure.

Let's stay afloat on every boat,
Pray for no more war!

A VIEW FROM A COUNCIL SEAT

Hello everybody. By the time you read this, kids will be back in school, leaves are changing and starting to fall. Speaking of kids, it's not hard to express the absolute feeling of joy when I see my grandson playing with other Roosevelt pre-school children. The best part is when he sees me and gives me the biggest smile a three year old can possibly give.

Now for everyone's favorite topic: our public utilities. Oh no, not your favorite? Well don't worry it's not anybody's favorite topic.

Mayor Beth, Council members have shown me a lot of respect for my opinions on Public Utilities—it has not gone unnoticed by me. I take the responsibilities of being Chair of Utilities as an important function of the Council.

We are underwater, pun intended, in terms of funding for major upgrades and improvements to the Utility infrastructure. Unless our loans disappear and a couple of million appear, we're on our own and rates will go up. In Roosevelt, homeowners and landowners have to pay taxes to the Borough, but the majority of homeowners also have to pay high rates to the Borough for water and sewer.

Unfortunately we cannot write off our water bill like we do with our tax bill. The Borough of Roosevelt owns a utility, an asset, and the Borough is responsible for maintaining and operating its facilities and infrastructure, as well as all our assets.

Question: Does the Borough have the right to continually raise rates to the point where it becomes a burden, mainly because of its inability to maintain its facilities properly and passing the cost on to us rate payers? It's just a thought; past is past, there's no blame on present and past councils.

Councils are expected to know how to operate a Utility; well we don't have that experience and knowledge. That is the problem. Sometimes wrong decisions are made because of that lack of knowledge. Unfortunately those past decisions are killing us now. I have been chair of Utilities for nine months, and I have been to both plants over 40 times, and each time I have to wince. It's not a pretty site—the facilities are so run down it hurts my eyes. Unless we as a town show as much interest in our Utilities as we do with our School, First Aid Squad and Fire Company, we are going to be faced with bigger utility bills. I can't stress the need any more than I have for the public to get involved, ask questions, and come to Council meetings. In the mean time, I will try to do what I can with what we have and hope for the best.

Until next time stay well,

Utility Chairperson Stu Kaufman



The RPS PTA and Roosevelt Volunteer Fire Company invite you to

Captain Hook's Pirate Pit Stop



*Stop by, have a drink, take a treat, and visit Captain Hook,
Peter Pan, and Tinkerbell on Halloween night.*

Friday, October 31 5PM - 9PM

The RPS lobby will be open on Halloween night and staffed by volunteers as an additional stop for trick or treaters.
This is meant to be a rest-stop only, this is not a stand-alone event.

To date the Roosevelt Volunteer Fire Company has responded to 31 calls in the Borough of Roosevelt. Several of these calls have been related to recreational fire pits. With the weather getting cooler, it's prime season for campfires in the back yard. Before you break out the marshmallows, there are a few things you should be aware of. In the state of NJ, fire pits with a screened chimney, such as a chiminea, and cooking fires are the only two types of recreational fires that are allowed without a permit. If you plan on burning in an open fire pit, or having any other type of recreational fire, the "General Forest Fire Act" (N.J.S.A. 13:9 et. Al.) requires you to contact the nearest Forest Fire Service office to request a permit. Residential campfire permits are free, but must be requested 10 days in advance. To request a permit, you can contact our local New Jersey Forest Fire Service office in New Lisbon, NJ.

Thank you to the Roosevelt Public School for repainting the fire zone at the school. A properly maintained fire zone is critical to protecting the safety of our children. Should an emergency ever arise, emergency vehicles need to be able to access the front entrance of the school quickly, which becomes difficult when cars are parked where they shouldn't be.

In other news, we would like to welcome our newest member, Nickle

Mitchell who was voted in at our September meeting. Nickle's membership brings our department up to fifteen (15) members. He will be our sixth member to go through the Fire Academy, which he will start in February 2015. Our current group of recruits started class in August and are scheduled to graduate in January 2015.

We would like to thank Mike Fleming at Pentair Flow Technologies for the generous donation of our newest piece of equipment, a Hypro gas powered water pump. This pump will be critical as an emergency response tool to the home and basement flooding calls we get throughout the year. Previously, some of our members were bringing their personal pool pumps to calls to help in these situations.

We are also very pleased that the IRS has granted us 501(c)(3) status, which opens the door to many more potential grant opportunities for us.

We are still working on raising money to purchase a new truck, and our latest fundraiser, Comedy Night at Sarcasm, was a great success. Nearly 100 people attended and we raised over \$1,000 towards our goal of \$35,000. A huge thank you goes to Steve Trevelise, who organized the event for us. This was one of our most successful (and fun) fundraisers to date!

Our second annual town hayride and schoolyard pumpkin patch is scheduled for Saturday, October 18th. We acquired a new hay wagon for the event, and have a new route planned. We will also be selling pumpkins, baked goods and other fall items.

We have several other fundraisers in the works as well; we will be selling Holiday 50/50 raffle tickets from now until December. The winning number will be drawn on December 13, just in time for holiday gift shopping! The winning ticket could be worth up to \$2,000! We will also be running a pancake breakfast on Saturday, November 15, and our Santa's Delivery Service is scheduled for December 13th.

As always, we cannot continue to grow without the help of our volunteers, and we are always seeking new members. If you're interested in the different opportunities the fire department has to offer, please contact Chief Dan Archer at chiefarcher@roosevelt-fire.org.



Working Smoke Alarms Save Lives

Test Yours Every Month!

Fire Prevention Week • October 5–11, 2014





Roosevelt Volunteer Fire Company's

2ND ANNUAL

Town Hayride & Pumpkin Patch

Sat. October 18, 11:00AM - 2:00PM



\$8 per person, includes:

- 15 minute hayride through our new Halloween trail
- Pick a pumpkin from our Schoolyard Pumpkin Patch
- Play in the bounce house while you wait! *
- Come in costume and receive a special surprise!

RAIN DATE: Sunday, October 19th

Refreshments and baked goods available for purchase



Holiday Raffle Tickets Also Available!

*weather permitting

Contributors to the Bulletin 2013/2014

Contributions received after the 15th of the month will appear in the next Bulletin.

Robert & Robin Axel

Helen Barth

Janet & Richard Bernardin

Irene & Bruce Block

Patricia & Keith Clayton

Frances Duckett

Virginia Edwards

Judith & Ed Goetzmann

The Goldmans

Constance & David Herrstrom

Sheila & Phil Jaeger

Anna & Ben Johnson

Jill Lipoti & Brad Garton

Ng Family

Sanford & Ellen Silverman

Mark & Judith Zuckerman

Help us to fill up this page.
Thank you for your generosity!
Send in a contribution today.

Please send contributions to:
Roosevelt Borough Bulletin, Inc.
P.O. Box 221, Roosevelt, NJ 08555

Help Wanted

Looking for an opportunity to express yourself AND have a positive impact on your community?

Ready to interact with some of the finest U.S. Postal employees in the entire Garden State?

The Roosevelt Borough Bulletin is looking for a few good men, women, or children to contribute articles of local interest and to assist with distribution.

In particular, we are looking to include articles about Borough history, information about important local issues, reports on community meetings, as well as personal recollections from individuals who have been inspired to move to Roosevelt (see my own article in this issue, offered as a model and an inspiration for others who will—and should—feel like they can do better). If you're longing to see your name in print, this could be your opportunity.

We also need a willing individual to drive 400 copies of the Bulletin to the Freehold P.O., converse with Alex—the friendly and helpful postal employee who handles bulk mail—and then drive the copies back to Roosevelt for distribution by our own friendly and helpful Postmaster. This entire operation takes about two hours and occurs once a month. This is a non-paying job and you'll use your own gas, but you'll be performing an incredibly valuable service to the entire Roosevelt community.

If interested, please contact Managing Editor Rick Pressler at rpressler32@gmail.com or 201.785.4490.

BUSINESS SPONSORS

The Bulletin publishes free-of-charge public information listings from Roosevelt residents and businesses, and from those in the immediate vicinity with ties to Roosevelt. Write: Roosevelt Borough Bulletin, Box 221, Roosevelt, NJ 08555. Contributions are appreciated and are tax-deductible (suggested: \$50.00/year, \$60.00 if over 5 lines.) Deadline is the 15th of each month.

AUTOMOBILE SERVICING

COMPACT KARS
3 Trenton Lakewood Road,
Clarksburg, NJ 08510
Complete Mechanical & Auto Collision
Repairs/Towing/Select Used Cars
609-259-6373

LANE TIRE CENTER
Complete Auto Care Center
All Work Guaranteed/Foreign & Domestic
387 Mercer St., Hightstown
448-9500

HOME IMPROVEMENT
CONSTRUCTION, E T A L

GREG DEFOE
Handyman Service
Interior/Exterior Painting
Complete home repairs and renovations
Fully insured

PROMPT RESPONSE GUARANTEED
80 Pine Drive, Roosevelt, NJ 08555
609-448-4883 cell: 609-577-4081
gdefoe123@verizon.net

3 6 EAST WINDSOR FLOOR COVERING
We've got your entire floor covering needs
WOODVINYL**TILE**CERAMIC**
Wall-to-Wall Carpets, 888 Area Rugs
Two locations to serve you better
East Windsor Hamilton
609-443-6999 609-890-6111

MICHAEL D. PRYZCHOCKI,
GENERAL CONTRACTOR, INC.
Small Job to Total Construction.
Roofing, Additions.
Renovations – Bathroom, Kitchens,
Remodeling – Major and Minor Repairs.
References Available. Fully Insured,
Free Estimates, Certified Contractor.
10% Senior Citizen Discount 448-2180
N.J. Lic. #13VH01307200

HAGUE HEATING & COOLING LLC
For all your Heating & Air Conditioning
needs
Family owned and operated
Over 30 years in the business
NJ LIC.# 13VH03566200
Call 609-448-5424 Fax 609-426-0534

ARTHUR R. STINSON CONSTRUCTION
Since 1982 Specializing in Home Addition,
Bathrooms & Kitchens & Finished Basements
Brick & Concrete Patios-Stamped Concrete
Energy-Saving Windows & Doors
Ceramic Tile

Free Estimates State License
448-0154 #13VH00923900
Fax 448-1122 Fully Insured

TOM ORLANDO PLUMBING
& HEATING
Master Plumber's License #12179
Fully Insured & Bonded
Total Bathroom Renovation
Sewer Line or Water Service Replacement
Hot Water Boiler Replacement or Repair
Repair Faucets, Toilets, Hose Bibbs, etc.
609-903-6488

DR.K's DESIGNSCAPES INC.
P.O. Box 516, Roosevelt, NJ 08555
(609) 448-1108 / (732) 939-2085
www.drk-s.com
Fully Insured & Licensed
Craig Kaufman, President
Rutgers Landscape Architecture Graduate
Snow Plowing & Snow Removal
Lawn Mowing / Tree Removal / Pruning
Designs / Planting Plans / Landscape
Lighting
Spring & Fall Clean-Up
Mulch / Stone / Top Soil
Gutter Clean-Out / Power Washing
Fertilizing & Weed / Pest Control
Driveways / Retaining Walls
Concrete Staining / Sealing
Patios Natural Stone & Concrete Pavers
Landscape Lighting
Fencing / Fire Wood

SPECIALTIES

PET SITTER
Fully Insured
609-448-8682
Discount to Roosevelt Residents
Jaimie Witherspoon

PET PLEASERS

Dog Training Services
Certified Dog Trainer
Pet Sitter
Boarding & Grooming
609-426-4209

MENDIES FAMILY FARM
65 N. Rochdale Ave., Roosevelt
Year-Round Farming
Community-Supported Agriculture (CSA)
Spring/Summer & Winter CSA memberships
(609)-820-8809 • www.mendiesfarm.com

ATTENTION ROOSEVELTIANS!
We have been handling houses in Roosevelt
on every street in town since the early 1940's.
Let us show you how we can save you money.
THE ADLERMAN AGENCY, INSURORS
317 Forsgate Dr., Monroe Twp., NJ 08831
(609) 655-7788 Mel A. Adlerman CLU, CPIA

MUSIC

GUITAR INSTRUCTION
Age 7 & up
David Brahinsky: 443-1898
STORYTELLING & FOLK SINGING
AVAILABLE FOR PARTIES.

PERSONAL CARE

TTAI CHI CLASSES
Roosevelt Boro Hall
Wednesday 9:30 am – 11 am
Thursday 6 pm – 7 pm & 7 pm – 8 pm
June Counterman 609-448-3182
Email bilcount@quixnet.net

MATH TUTORING



ROOSEVELT STUDENTS:
Elementary through College
Do you occasionally need help with math
homework or help preparing for a test?
Call Mary Tulloss (Retired H.S. Teacher)
for appt.: 609-448-5096
Tutoring provided at no charge
in loving memory of Sarah Tulloss.

NON-PROFIT ORG.
U.S. Postage
PAID
Freehold, NJ
Permit No, 6

PRSRT STD
Postal Customer
Roosevelt, NJ 08555-0221



OCTOBER

OCTOBER

7 Tues.	7:00 pm	Planning Board, Borough Hall
7 Tues.	12:30 pm	Senior Citizens Meeting, Borough Hall Chair Chi by June Counterman
8 Wed.		Recycling Pickup 
12 Sun.	10:00 am	Roosevelt First Aid Squad, Training Jack Rindt, Training Officer
14 Tues.		Bulk Garbage Pick Up
14 Tues.	7:00 pm	Council Action Meeting, Borough Hall Beth Battel, Mayor, 448-7701
14 Thurs.	7:00 pm	Fire Company Business Meeting, Chris Suk, President 490-0931
15 Wed.	7:30 pm	Environmental Comm. Mtg., Borough Hall, Diane Lowery, Chair.
18 Sat.	8:00 pm	Roosevelt Arts Project Designs for Roosevelt, Borough Hall, Program featuring Roosevelt resident and Rutgers Prof. of Landscape Architecture Kate John-Alder.
18 Sat.	10:00 am – 3:00 pm	2nd Annual Hayride & Pumpkin Patch at Roosevelt Public School
21 Tues.	8:00 pm	Roosevelt First Aid Squad, Business Meeting, Jeff Klein, President
22 Wed.		Recycling Pickup 
23 Thurs.	7:30 pm	RPS Board of Education, Natalie Warner, President, 609-903-1061
27 Mon.	7:00 pm	Council Action Meeting, Borough Hall, Beth Battel, Mayor, 448-7701

An electronic calendar was installed on the Roosevelt Board of Education's website containing information about state testing, upcoming field trips, events and additional pertinent information. Learn more about all of the happenings in our school, visit RPS website: www.rps1.org. Please send notice of your events to Bulletin at P.O. Box 221 or email to RooseveltBulletinSubmissions@gmail.com

NOVEMBER

5 Wed.	12:30 pm	Senior Citizens Meeting, Borough Hall
4 Tues.	6:00 am – 8:00 pm	Election, Borough Hall
5 Weds.	7:00 pm	Planning Board, Borough Hall
5 Wed.		Recycling Pickup 
8. Sat.	8:00 pm	Roosevelt Arts Project Musical London, Borough Hall, A piano recital with commentary by Alan Mallach
9 Sun.	10:00 am	Roosevelt First Aid Squad, Training Jack Rindt, Training Officer
10 Mon.	7:00 pm	Council Action Meeting, Borough Hall Beth Battel, Mayor, 448-7701
13 Thurs.	7:00 pm	Fire Company Business Meeting, Chris Suk, President 490-0931
15 Sat.	8:00 am – 11:00 am	Fire Company's Pancake Breakfast, Borough Hall
16. Sun.	11:00 am	Roosevelt Arts Project Mural Talk 12 - 5 pm Studio Tours Annual Studio Tour and Sale, Roosevelt Public School & Studios.
19 Wed.		Recycling Pickup 
18 Tues.	8:00 pm	Roosevelt First Aid Squad, Business Meeting, Jeff Klein, President
19 Wed.	7:30 pm	Environmental Comm. Mtg., Borough Hall, Diane Lowery, Chair.
20 Thurs.	7:30 pm	RPS Board of Education, Natalie Warner, President, 609-903-1061
24 Mon.	7:00 pm	Council Action Meeting, Borough Hall, Beth Battel, Mayor, 448-7701
27 Thurs.		Thanksgiving. RPS Closed.
28 Fri.		RPS Closed