



Bulletin



Volume 39 Number 7

April 2016

BOROUGH COUNCIL NEWS

By SharonWalz

New Fire Chief and Zoning Officer, Water and Sewer Update, Stream Monitoring, Invasive Species, and Dog Fun Run Events April 9th

During its February 22nd and March 14th meetings, the Borough Council approved the final reading of a Bond Ordinance to provide for rehabilitation of the Borough water tower.

The Council also approved the appointment of Chris Suk as Fire Chief to the Roosevelt Volunteer Fire Company, which now has 12 active fire fighters and 16 members total.

Joseph McGrath was appointed Zoning Officer. Roosevelt continues to have an opportunity to gain certification from Sustainable Jersey, a nonprofit organization that provides tools, training and financial incentives to support communities as they pursue sustainability programs. There are various levels of certification available, and points can be earned towards certification through various activities that support environmental sustainability. (More information regarding Sustainable Jersey programs is at www.sustainablejersey.com.)

Council member Jill Lipoti provided a Water and Sewer update which indicated that further research needs to be done to ensure that the current rates are set at the correct level. Currently, there is an affordability assessment being conducted by representatives from the University of North Carolina. There is also a new engineer from R3M studying the efficiency of the utilities; all projects with NJDEP/NJEIT are deferred until the results of the study are known. Some options may reduce the amount of chemicals used by the plant for water treatment and in drinking water, as

well lower the cost of operation. In addition, PSE&G will be installing gas service to the lift station on Lake Drive.

Jill is also working with Diane Lowrie on an Environmental Commission grant to complete trail work up near the cemetery and to make repairs to the trail near Rt. 571 and Tamara Drive. The public is invited to the next Environmental Commission meeting (April 20th, 7:00 pm at the Borough Hall) to provide input on this project, as well as future trail projects.

Kelby Warner requested and received Council permission to hold a Dog Fun Run and Show to raise awareness about dog fighting and to raise money for the ASPCA. The event will take place on Saturday, April 9th on Roosevelt School property, with the show being held in the Roosevelt Memorial Amphitheater.

The Roosevelt First Aid Squad discussed a plan to obtain a much needed automated CPR device that is capable of performing CPR on a critical patient, freeing the EMT to perform other critical functions, such as assessing the patient, starting IV lines, and administering medication. In addition, the automated device performs CPR with an efficiency rate of 88%, whereas manual CPR is only about 31% efficient and declines over time. The Roosevelt First Aid Squad has raised \$7500 on their own, and requested additional funding from the Council. The cost of the automated CPR device is between \$12,000 and \$15,000. The motion was unanimously approved.

Continued on Page 3

I N S I D E T H I S I S S U E

Roosevelt Public School Education Foundation	4	Board of Education	9
Environmental Commission	6-7	Roosevelt Arts Project	11
School News	8	Breaking Bread	12

ANNOUNCEMENTS

Welcome to the 39th edition of the Roosevelt Borough Bulletin. There will be ten issues running from September through July. We will not publish in January and August.

We welcome your emailed submissions for articles, letters, poems, artwork, and other items of interest. Please send your submissions and inquiries to Rick Pressler (rooseveltbulletin submissions@gmail.com). Non-digital submissions will be accommodated to the best of our ability, but we cannot guarantee publication. Inclusion of all items is subject to the availability of space and the editorial judgment of our Editor. Items must be received by the 15th of the month to be included in the next issue.

We will do our best to make the Bulletin both informative and interesting with the help of our devoted writers and production people.

If you want to CONTACT THE BULLETIN, please look at our masthead to the right with our address as shown.



Please report any bear sightings to:
State Bureau of Wildlife Management
Kim Tinnes, Wildlife Control
609-259-7955

The MEALS ON WHEELS program delivers prepared meals to Roosevelt seniors who need this assistance. Though meals are provided free of charge to recipients, the cost to the program is \$2.50 per meal. Donations to help cover these costs may be sent to Interfaith Neighbors, 810 Fourth Avenue, Asbury Park, NJ 07712.

SENIOR CITIZENS: There is a S.C.A.T. bus provided by Monmouth County Division of Transportation that comes to Roosevelt on Wednesday mornings at 9:00 a.m. and will take you shopping to ShopRite in East Windsor. The bus will pick you up at your home, you spend 1 ½ hours shopping, and the bus will take you home and leave your groceries at your door. There is no charge to you for this service.

If you wish to go, you must call the S.C.A.T. bus Tuesday no later than 3:00 p.m. at 732-431-6485 and press 1. Give them your name, address, and the town you are from, and your interest in going on Wednesday, the next day.

An archive of all past issues of the Bulletin can be found online at www.mazicmusic.com/rbb.htm, courtesy of Mark Zuckerman. Current and recent issues can also be found online at www.boroughbulletin.org, the official website of the Borough Bulletin that is maintained by Bulletin Trustee Bob Francis. To have the Bulletin sent to you by email, please go to www.boroughbulletin.org and press the “Push Here to Sign Up for Bulletin” button.

The Roosevelt Borough Bulletin is published monthly, except August and January by Roosevelt Borough Bulletin, Inc. P.O. Box 221, Roosevelt, NJ 08555

BOARD OF TRUSTEES

Sharyn Walz, Bob Francis,
Rick Pressler, Kevin McNally,
Michael Ticktin

EDITOR

Michael Ticktin

MANAGING EDITOR

Rick Pressler

TREASURER

Kevin McNally

CONTRIBUTING WRITERS

Sharyn Walz
Michael Ticktin
Mary Robinson Cohen

BUSINESS

Kevin McNally

GRAPHIC DESIGN

Hope Pressler

WEB MASTER

Bob Francis

DISTRIBUTION

John Lenart

Roosevelt Borough Bulletin, Inc., is a New Jersey Non-Profit Corporation

Continued from Page 1

The Borough's liquor license, currently held by the owners of the former Roosevelt Deli property, is up for annual renewal. The Borough opposes the renewal since the deli remains closed. The Borough requested the license be returned to the Borough for alternate use. An administrative hearing was held but no decision has yet been issued.

Councilmember Malkin attended a Planning Board meeting that concerned the rezoning of the Borough-owned "gas station property." The property has been zoned for redevelopment or affordable housing use for the past 15 years, and it must conform to the Roosevelt Master Plan or show cause to deviate. The Roosevelt Volunteer Fire Company has notified the Council that it is withdrawing its participation in the Fourth of July town picnic and celebration. Councilman Malkin will be contacting the Recreation Director to discuss alternatives.

Mayor Ellentuck is meeting with Verizon FIOS to reconfigure telephone and internet services at Borough Hall and the Water/Sewer Plants. Switching service providers will provide a large cost-savings to the Borough. The sinking parking lot area in front of the current firehouse has been temporarily repaired, but will require a permanent fix to avoid a safety hazard.

Public comments included a request for CPR classes and training on the Automated External Defibrillator machine. John Vo advised that several trainings are offered but resident attendance is very low or sometimes none. He will speak with Jack Rindt about scheduling future trainings if enough residents express an interest.

Mark Connors emphasized the need to ensure all street signs are repaired quickly, as the Borough is protected by NJ State Troopers who may not be familiar with Roosevelt. Any confusion could result in a delayed response. In addition, residents are reminded to post large, highly visible house numbers near their homes to help emergency service providers locate them quickly.

Assenka Oksiloff requested an update on her noise and harassment complaint against the Roosevelt Volunteer Fire Company, and offered to supply Council with Standard Operating Procedures from other Fire Companies for comparison. Mayor Ellentuck replied that the matter has been settled and agreed to review the documents to determine if an update would be beneficial.

Mary Tulloss announced plans for upcoming environmental projects on April 9th (April 16th rain date), involving stream monitoring and invasive species removal. (See Bulletin insert or email Rooseveltinvasive@outlook.com for additional details and to register.)

Branch pick up will be scheduled the week of April 18th.

Mary also thanked Councilmember Jill Lipoti for previous information regarding available grants for cleaning up. The Roosevelt School Educational Committee, the Roosevelt Arts Project, and the Roosevelt PTA will each receive \$500 for participating in the Litter Pick-Up event on Sunday, May 1st.

Jeb Shahn requested that the Borough's contracted lawn care service mow the tall weeds that grow near the triangle at Homestead and North Valley Drive.

Eitan Grunwald provided an update on the work being done with the New Jersey Audubon Society towards the creation of a Forest Management Plan. A certified forester has been assigned to the project and will be making a site visit in mid-April.

April Suk mentioned that there are geocaching sites on several of the trails: near the cemetery, on Lake Drive, near the water plant, and at the head of the Roosevelt Woodland trail where there is a geocache known as "The Mushroom Men" (see https://www.geocaching.com/geocache/GC1G53Z_the-mushroom-men for details).

THE ROOSEVELT BOROUGH BULLETIN

is distributed free-of-charge to Roosevelt residents. We look forward to and appreciate contributions which are very much needed to keep our publication going. Contributions are tax deductible

PLEASE NOTE: Due to postal regulations we can only ask for "donations" rather than "subscriptions" from out-of-towners who wish to receive the *BULLETIN*.

We will be pleased to continue sending them the *BULLETIN* when we receive their contributions which, of course, can be for the same amount (or more) as in the past.

In order to save on postage, we would encourage non-residents who have computers to subscribe to the *Bulletin* online at www.boroughbulletin.org in lieu of receiving a paper copy. Donations from readers, wherever they may be, and regardless of the medium in which they read the *Bulletin*, are still very much welcome, since we could not publish without your support.

PLEASE SEND IN A CONTRIBUTION TODAY. ***WE NEED YOUR SUPPORT.***

Please send contributions to:
Roosevelt Borough Bulletin, Inc., P.O. Box 221, Roosevelt, NJ 08555

RPS Education Foundation Upcoming Events

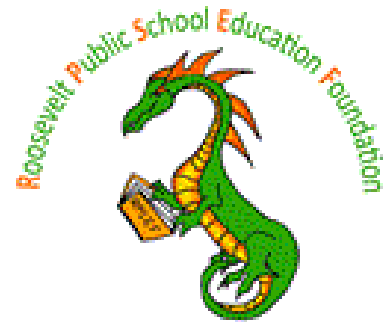
By Debbie Visconti

The Roosevelt Public School Education Foundation (RPSEF) is pleased to announce it will be hosting another six-week session of Pilates. Roosevelt resident and talented instructor Stacey Bonna will lead these sessions, which will be held in the RPS gym. The event runs Thursdays, April 7th through May 12th, 6:45 to 7:30p.m., \$15 per class or \$60 for a 6-week session. For more information email us at foundation@rpsef.org. Get your heart pumping in support of RPSEF!

If Pilates is too strenuous, come out for a night of music and entertainment on April 23rd in the RPS main lobby. The Neighbors Jazz Quartet, featuring Ron Kostar on clarinet and vocals, Judith McNally on keyboard, Kevin McNally on percussion, and Nancy Hamilton on vocals, will be performing from 7:00 to 10:00 pm. In addition to music, there will be a silent auction, refreshments provided, and wine (by the glass) available for purchase. Tickets are \$10 and all proceeds will benefit the RPS students. Join us for a rousing evening of jazz standards and show tunes!

Not able to make either of these events? Watch our website or Facebook page for more information on our annual Rockville Climbing event, tentatively scheduled for May 6th.

Want to become part of the excitement and support the students of RPS? Visit our website at www.rpsef.org and make a donation today or volunteer to help with an upcoming event. Thank you for everyone’s continued support and making our organization a success!



Debbie Visconti
RPSEF Treasurer

Free Food Distribution

To All Roosevelt Residents:

Do we have any needy families in Roosevelt? I’m sure we must; there is nothing to be embarrassed about. Times are hard, people are out of work or on a fixed income.

Food is distributed, free of charge, by volunteers one Saturday a month between 10:00 am and noon at the Clarksburg Community Center, Route 571, next to the Clarksburg Fire House. You have to pick it up yourself since there is no delivery. No questions as to eligibility will be asked.

The Saturdays do vary, so when I find out which Saturday, I will put a notice on the bulletin board at the Roosevelt Post Office. Call me if you have questions.

Geraldine Millar 609.448.0351

Lawn

I sometimes wish for a lawn.
Not one of uniform green,
Or carpet-like consistency,
But a wild, rangy sort of thing,
Chaotically filled with clover and wild strawberry,
Crabgrass and feral ajuga,
The occasional squirrel-planted crocus, and
Moss, moss, moss.

--Sol Epsky

Borough Receives National Trails Program Grant

The borough of Roosevelt has been awarded a national Recreation Trails Program (RTP) grant of \$8,000 to purchase tools, supplies and materials to be used to repair and enhance some sections of the Roosevelt Woodland Trail. At the same time, the nationally-acclaimed Student Conservation Association (SCA), partnering with Roosevelt Borough and the Assunpink Wildlife Management Area, also received an RTP grant to work on the Roosevelt Woodlands Trail.

Attend the April 20 Environmental Commission meeting (7:00 pm at Borough Hall) to learn more about the trails and to give us your input on this project.

Roosevelt All-Town Spring Litter Pick-Up

Sunday, May 1st

10 am

Meet in front of the Post Office.

Coffee and donuts and pick-up tools will be supplied.

Usually finished by around noon, at which time there will probably be an outdoor brunch

Featured groups include the PTA, RAP, and the Roosevelt Public School Education Foundation.

Please come out and help clean the town as we go into the spring and summer.

PET WASTE POLLUTES OUR WATERS

WHAT CAN YOU DO TO HELP PROTECT OUR WATERS

Pick up after your pets. Properly dispose of pet waste into the trash. Animal waste contains coliform bacteria, which is harmful to our health.

Carry a newspaper or plastic bag to pick up the waste while walking your pet

When treating your pet and yard for fleas or ticks, check with your veterinarian for safe substitutes. Never dispose of flea dip liquid on the ground or in the storm drain. It should be disposed of as a household hazardous waste.

Visit www.state.nj.us/dep/dshw/rnp/hhwcp for list of county household hazardous waste disposal centers.

Do not feed wildlife such as geese, pigeons, ducks and deer. Feeding results in more pollution from their waste.

For more information please contact the following:

**NEW JERSEY DEPARTMENT OF ENVIRONMENTAL PROTECTION
DIVISION OF WATER QUALITY**

BUREAU OF NONPOINT POLLUTION CONTROL

MUNICIPAL STORMWATER REGULATION PROGRAM

(609)633-7021

WWW.NJSTORMWATER.ORG

Invasive Plant of The Month



One of these things is an invasive species--did you guess the right one?

The National Invasive Species Management Plan (NISMP) defines invasive species as “a species that is non-native to the ecosystem under consideration and whose introduction causes or is likely to cause economic or environmental harm or harm to human health.” While both the panda and the bamboo are non-native, it’s the bamboo that is doing the invading here. Although bamboo is not listed on the Do Not

Plant List published by the New Jersey Invasive Species Strike Team (<http://www.njisst.org/documents/DoNotPlantList.pdf>), it can still cause problems in your garden, your neighborhood, and even in public areas.

Native to Asia, bamboo was originally introduced as an ornamental plant. While there are many different varieties of bamboo, they primarily fall into two categories: clumping and running.

Clumping varieties include Bambusa, Borinda, Chusquera, Fargesia, and Otatea. Clumping bamboo grows very quickly, makes a great privacy screen, but may not survive the winter. That’s why unwitting gardeners may be tempted to plant running varieties, such as Chimono-bambusa, Indocalamus, Pleioblastus, and Sasa. One such running variety, *Phyllostachys aurea* Carrière, aka “fishpole” or “golden bamboo,” can grow 12 inches a day and is nearly impossible to contain due to the plant’s ability to send out underground rhizomes, or “runners.” These runners allow new shoots to sprout up 20 feet away from the original planting area. Here in Roosevelt, we all have pretty big yards, but with a spreading ability like that, it’s not surprising that your bamboo could begin sprouting in your neighbor’s yard! Raritan Township actually considered passing an ordinance to control bamboo



when residents complained about bamboo spread from neighboring yards. After all, with bamboo’s strength, it could potentially break through the walls of in-ground pools, causing serious damage.

Some bamboo can also grow high enough to interfere with power lines. Over on School Lane, there is a stand of bamboo

that must be maintained to avoid becoming entangled in the overhead wires.

Eradicating Bamboo

Anyone who wants to get rid of bamboo has a huge task in front of them. Even the most diligent gardener will soon become frustrated with bamboo’s tenacity—it can push through burlap and plastic, and it will not hesitate to go over and under even concrete barriers.

As soon as the first sprouts emerge in spring, smash



ENVIRONMENTAL COMMISSION

them to ground level using the back of a shovel and continue for several weeks while the shoots are tender and before they become woody and tough. Then, using a paintbrush, apply the strongest recommended strength of Roundup to the cuts. If you prefer organic methods, you can also use boiling water on the shoots. As with the chemical method, you must treat any bamboo shoots as soon as they appear. Finally, keep an eye out throughout summer for those stubborn renegade runners. Expect it to take two to three years of treating the infested area before you will completely control bamboo spread.

Alternatives to Bamboo

There are good alternatives to bamboo for screening, such as the grass-like Carex, or sedges and evergreen conifers such as "Green Giant" thuja, "Emerald Green" arborvitae, and Leyland cypress. Remember to avoid planting any plants where they could interfere with power lines as they mature.

For more information:

<http://www.hgtvgardens.com/garden-basics/nursery-school-avoid-bamboo-like-the-plague>

<http://www.houselogic.com/photos/plants-trees/invasive-plant-species/slide/bamboo/#ixzz42Dzr0Soy>

<http://www.invasivespeciesinfo.gov/docs/council/isacdef.pdf>

<http://www.njisst.org/>

http://www.nj.com/hunterdon-county-democrat/index.ssf/2012/11/bamboo_ordinance_invasive_plan.html

Volunteers Needed for Environmental Projects

The 2015 Environmental Resources Inventory recommended further action in three priority areas:

- Managing the health of our forest, including consideration of fire hazards.
- Managing the control of invasive plant species.
- Managing the health of our streams, including monitoring and the possibility of restoration.

The Environmental Commission is developing projects to address each of these priority areas. If you'd like to learn more and get involved, contact Eitan Grunwald at eitan@eitangrunwald.com or (609) 426-4636.

NJ Department of Environmental Protection

24-Hour Hotline

**1-877-WARNDEP or
1-877-927-6337**

**For reporting spills,
hazardous discharges,
and other
environmental
emergencies.**

WHAT'S THE PROBLEM WITH FERTILIZERS AND PESTICIDES?

Fertilizers help plants grow by adding nutrients to the soil. Pesticides (including herbicides) are any toxic substances used to kill insects, animals or plants. If fertilizers or pesticides are improperly applied, they can wash off your lawn or garden into storm drains and directly to our lakes, rivers, and the ocean. These chemicals can contaminate your drinking water, as well as kill fish, wildlife and plants. Too much fertilizer washing into a lake can cause algae to bloom in lakes, which will affect swimming, fishing and boating.

YOU CAN HELP!

- Test your soil at your County's Rutgers Cooperative Research and Extension office, or buy a self-test kit.
- Use natural, slow-release nitrogen, or low phosphorus fertilizers.
- Look into natural alternatives to fertilizers and pesticides, such as integrated pest management (IPM).
- If you need to use fertilizers or pesticides, follow the instructions on the label on how to correctly apply.
- Do not apply fertilizers or pesticides before it rains. This will not allow the fertilizers or pesticides to penetrate through the soil.
- Use drought-resistant native plants in gardens; they require less fertilizer and less water.
- Use a mulching mower instead of bagging grass clippings.

WHY SHOULD YOU CARE ABOUT CLEAN WATER?

Stormwater pollution is one of the greatest threats to New Jersey's clean water supply. Clean water provides access to safe drinking water, places for recreation, commercial opportunities, healthy wildlife habitats, and adds beauty to our landscape. Rain washes pollution from streets, parking lots, and lawns into storm drains, then directly to our streams, rivers, lakes and the ocean.

Did you know more than 60 percent of water pollution comes from things like motor oil, fertilizers, pet waste and detergents? By sharing the responsibility and making small, easy changes in our daily lives, we can keep common pollutants out of stormwater.



www.cleanwaterNJ.org



Thanks to the Washington State Department of Ecology, King County, and the cities of Bellevue, Seattle and Tacoma.

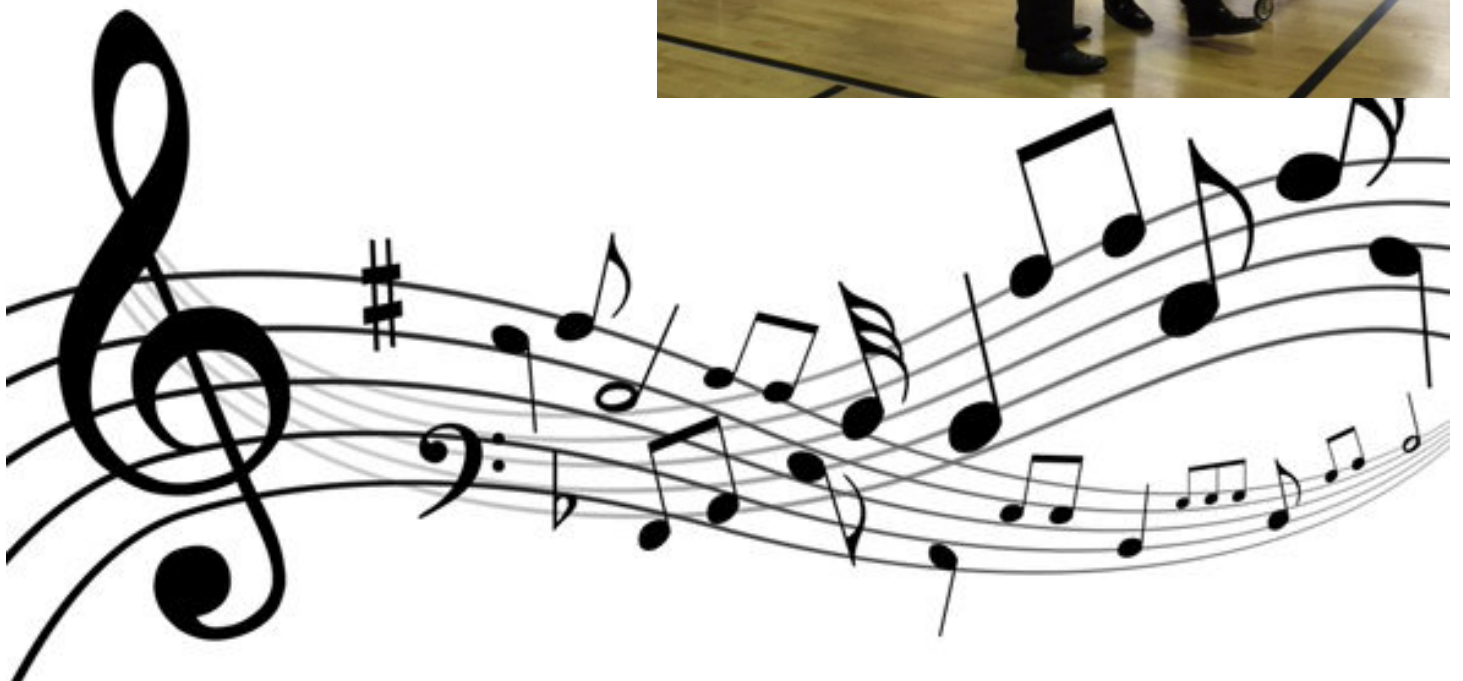
Happy Spring everyone! Here at RPS we are eagerly anticipating Spring Break (March 25 - April 3)—we know that the end of school year always comes around very quickly after we reconvene.

When we come back, students in grades 3 to 6 will take the state assessments known as PARCC. These assessments were new last year; however, our district performed exceptionally well on them, and we anticipate that our students will do the same this year. RPS has a long tradition of academic excellence; teachers and students work extremely hard all year long, and we are proud of the fact that in addition to mastering the core subjects, we still make time to concentrate on art and music, and play at recess every day, too!

I have included two pictures from recent events here at RPS. Mrs. Gazzani's third grade class has been studying biographies, and Amalya Gulliyeva gave remarkable presentations to her class and our Board of Education as Clara Barton.

Last week, we had another assembly presented by Young Audiences of New Jersey. A trio of musicians introduced all of our students—grades pre-K through 6—to percussion instruments. At the conclusion of the assembly, our art teacher, Ms. Witlieb, helped the students create instruments from recyclables, while our music teacher, Ms. Reynolds, conducted the students while they played their hand made instruments!

Our Spring Concert is coming in May—I hope that you will all join us.





By Rick Pressler

MISSION

To educate and inspire all students to excel academically*, to become independent and creative thinkers, skillful communicators and lifelong learners. Roosevelt Public School nurtures and challenges the unique potential of each student so that our children will develop individual, social and civic responsibility as well as respect for themselves, each other, and the environment.

*to achieve or exceed N.J. CCCS at all grade levels

The Roosevelt Board of Education met on March 22 to review and approve its 2016 – 2017 budget and consider a proposal from the New Jersey School Boards Association for the development of a district strategic plan.

The 2016 – 2017 budget is generally similar to the current year budget, reflecting anticipated cost increases and allowing for continued improvements in the school facility, including the removal of

old building materials that might contain asbestos and the updating of instructional technology.

The budget also maintains current levels of shared services with Millstone, maintains a professional development budget of \$17,000, and assumes a 10% increase in health benefits.

By way of comparison, the current year budget (2015-16) is \$2,750,301; the proposed budget for 2016-17 (next year) is \$2,814,142. In spite of this increase of \$63,841, or 2.32%, the Board is proposing a Tax Levy decrease for Roosevelt residents of \$34,918— thanks to a small increase in State aid and the one-time use of excess surplus from previous years.

An additional public hearing of the budget will be held on April 28 at 7:30 pm at the school.

Also at the March 22nd meeting, Kathy Winecoff, the Board’s Field Service Representative from the New Jersey School Boards

Association, presented several options for facilitating the development of a strategic plan for RPS. Strategic plans typically outline a small number of significant five-year goals and objectives and identify the resources needed to achieve the desired results. The process often involves input from all stakeholders and allows for deliberation and dialogue about the school’s vision for the future. The Board will further discuss the options and act on a decision at one of its upcoming meetings.

Garbage and Recycling Reminder

Please make sure all garbage cans and recycle bins are out to the curb before 7:30 am on collection days. Thank you!

Join other good neighbors at
ROOSEVELT SOLAR VILLAGE
 North Valley Road, Roosevelt, NJ 08555

- One and Two Bedroom Units for Adults Age 62+ Years Old
- Some Units Available for Disabled Individuals 18+ Years Old
 - Rent is Based on Income & Eligibility Requirements
 - Parking available • On-site Maintenance

FOR MORE INFORMATION CALL: 609.371.1350
 Managed by: Lutheran Social Ministries of New Jersey

"USDA is an equal opportunity provider, employer, and lender."
 To file a complaint of discrimination write to USDA, Director, Office of Adjudication and Compliance, 1400 Independence Avenue, S.W., Washington, DC 20250-9410 or call (800)795-3272 (voice) or (202)720-6382 (TDD).




REMINDER FOR RECYCLING:



Always leave at least 3 feet between your garbage can and recyclable container(s). The arm that lifts the garbage can needs enough room to operate so it can avoid knocking over other containers.

Risk of New Tick-Borne Illnesses

By Jill Lipoti

The weather is getting warmer and it seems like a great time to take a hike on one of the wonderful trails in Roosevelt or in the Assunpink. But wait! Take the time to put on long pants and tuck them into your socks. You want to be able to spot ticks before they become attached.

There are at least 20,000 confirmed cases of Lyme disease every year in the United States. Everyone you talk to in Roosevelt has either suffered a case of Lyme, or knows someone who has. The symptoms are painful, but the disease is treatable with antibiotics.

Now there is a new disease that experts are warning about. It is a faster-acting, untreatable, and potentially fatal sickness called Powassan virus that is most commonly found in the same tick that transmits Lyme disease. The symptoms that develop within two to three hours of being bitten by a tick infected with Powassan virus are headaches, nausea, vomiting, muscle weakness, memory loss and speech difficulty. The Powassan virus can infiltrate the central nervous system, causing inflammation in the brain and spine, leading to encephalitis meningitis.

With Lyme disease, people can develop a bulls-eye rash. There is no marker with Powassan. With Lyme disease, it can take a couple of days to infect the person bitten after the tick latches onto his or her skin. The Powassan virus can transmit in a matter of hours.

The good news is that while Lyme is found in about 30 to 40 percent of the ixodes scapularis ticks, Powassan is only found in 2 to 3 percent of the ticks.

The bad news is that while Lyme can be treated with antibiotics, Powassan does not respond to antibiotics. Supportive care is the only treatment.

There is also another bacteria found in the Northeast that is spread by the same ticks that cause Lyme disease: Borrelia Miyamotoi disease causes flu-like symptoms such as headache, fever, chills, and muscle pain. But it can be treated with the same antibiotics used to treat Lyme.

The prescribed burning which took place around Roosevelt in the early spring should help to diminish the tick population. However, it really is best if you check yourself carefully for ticks after you walk in the woods or high grass. Ticks attach around the waist, behind your knees, and even below your hairline. Really check carefully. These tick-borne illnesses are serious.

Help Prevent Motor Oil Pollution

Motor oil does not dissolve in water. When motor oil runs into storm drains, either from changing your car's oil or from leaky cars, it goes directly into our lakes, rivers, and the ocean. Oil and other petroleum products are toxic and can contaminate your drinking water, as well as kill fish, wildlife, and plants.

Did you know that one pint of oil can make a slick larger than a football field? Used motor oil is the largest single source of all oil pollution in lakes, streams, and rivers. Americans spill 180 million gallons of used oil each year into our waters.

How you can help:

- Keep your car well maintained.
- Regularly check your car for leaks and or drips, and have your car repaired if needed.
- Take your car to a service center to change the oil.
- If you do change your own oil, do it in a garage, never on the street. Use a self-contained oil pan and discard the oil at a local service center for recycling.
- Never discard oil, gas, or antifreeze into a storm drain.
- If you spill a hazardous fluid, contain it immediately with rags and cat litter. Clean up the spill and properly dispose of the waste.

For more information about keeping our waters clean, see www.cleanwaterNJ.org.



The Roosevelt Arts Project

The Roosevelt Arts Project (RAP) is a collaborative venture of friends and neighbors in and around Roosevelt, New Jersey. Bringing together artists in a variety of media, our mission is to foster collaboration and present their work to the public.

Founded in 1986 by the nationally known artists, Bernarda Bryson Shahn and Jacob Landau, and others including writers and musicians, the Roosevelt Arts Project presents a series of annual programs. This varied series premieres new works by Roosevelt playwrights, painters and potters, folk singers, poets, and composers, as well as experimental collaborations.

DATE	VENUE	EVENT
Saturday, April 16 8:00 PM	Borough Hall	A Leap in the Dark Join the Roosevelt Poets As they explore the ordinary Mysteries around (and within) us.
Friday, May 6 & Saturday, May 7 8:00 PM \$10 suggested contribution (\$5 students and seniors)	Borough Hall	“The Roosevelt String Band in Concert” David, Paul, Ed, Sam, Kai, Joe and Howie will present an evening of folk music guaranteed to stimulate great thoughts, mighty feelings, sweet sensations and a whole lot of fun
Saturday June 4 12:00-5:00 PM	Assifa Space	Nature Art Show Photographs, paintings and drawings of nature will be displayed. Sounds of nature fill the environment as the viewer contemplates the theme.

The Roosevelt Mural

The mural shown in the header was created by Ben Shahn in 1937-38 to commemorate the New Deal resettlement community of Jersey Homesteads, now called Roosevelt, N.J. The mural can still be seen in the Roosevelt Public School. As one of the first and finest art works in the town, it is only appropriate that it should serve as the header for the RAP site.

Voluntary Contribution: For most events \$5 per adult, for the String Band \$10 per adult, \$5 for seniors and children. Visit RAP’s webpage at <http://www.rooseveltartsproject.org>

Be sure to join our mailing list at http://www.rooseveltartsproject.org/mail_form.php so that you get the brochure sent to you via email each season and timely reminders of each upcoming event.

For further information call Robin Gould at (609) 448-4616.

More About Roosevelt

Did you ever wonder where to look for more information on Roosevelt events and news? In addition to the Bulletin newsletter and the bulletin board at the post office, there are several online resources available:

- <http://www.rooseveltnj.org>
- <http://www.rooseveltartsproject.org>
- <http://www.rooseveltvoice.org>
- <http://mycommunitysource.com>

On Facebook, find more pages and information by searching:

- Borough of Roosevelt
- Roosevelt Volunteer Fire Company
- Roosevelt FAS (First Aid Squad)
- Roosevelt Invasive Species Committee



BREAKING BREAD

Recipe for Baked Cod

Submitted by
Jill Lipoti

Ingredients

- Canola oil for the baking dish
- 2 pounds skinless cod filets
- 1 garlic clove
- ½ cup tahini
- ¼ teaspoon ground cayenne pepper
- ½ teaspoon kosher salt
- ½ cup packed cilantro leaves
- ½ cup packed flat-leaf parsley leaves
- 2 lemons
- ¼ cup water
- ½ cup walnut halves, for garnish

Preparation Instructions:

- Preheat the oven to 450 degrees. Use a little oil to grease a baking dish. Arrange the fillets in it.
- Peel and coarsely chop the garlic. Place it in a blender along with the tahini, ground cayenne pepper, salt, cilantro and parsley leaves. Cut one of the lemons in half and squeeze the juice into the mix, and then add ¼ cup of water. Puree.
- Cover the fish completely with the sauce. Roast for 6-10 minutes, depending on the thickness of the fillets. The fish should be opaque and flake easily under a fork. The sauce will darken slightly.
- While the fish is in the oven, cut the remaining lemon into wedges. Toast the walnuts in a small dry skillet until fragrant and lightly browned.
- Serve the fish with the lemon wedges and walnuts for garnish.

Senior Group Meetings Open to All

The Senior Citizen group meets the first Tuesday of each month at the Borough Hall. However, these meetings are not limited to seniors. All adults are welcome to attend.

There are frequently guests who speak about a variety of topics, generally applicable to everyone. Finances, health, and safety in the home, are a few examples.

I encourage all residents to look for upcoming notices in the Bulletin and at the Post Office and take advantage of this worthwhile program.

Thank you! Peggy Malkin



ATTENTION ALL DOG OWNERS

All dogs over the age of 7 months must be licensed in the municipality where they are kept. Licenses are renewed each year in January. You may purchase dog licenses in person at the Borough Hall. Preferred times are Tues – Thurs, 10 am – 3 pm.

In order to process your license the following is required:

- Proof of rabies vaccination – State Law requires proof of rabies vaccination valid through October 31 of the current licensing year (10/31/16) for each and every dog to be licensed.
- Check or cash, no credit/debit cards. All fees payable to Borough of Roosevelt.

Basic Fees (per dog): \$7.00 license
 \$1.00 annual registration fee
 .20 annual Pilot Clinic Fund
 \$8.20 total regular fee

Late fees: Failure to obtain or to renew a license as required can result in penalty fees.

Please call Roosevelt Borough Hall 609-448-0539 for additional info and for potential evening hours.



Keep up to date with the latest happenings, events and announcements. Follow the Borough of Roosevelt on Facebook: www.facebook.com/RooseveltBoro

If you would like your organization's event posted to the Borough's Facebook page, please send event details to aprilsuk@gmail.com

Contributors to the Bulletin 2015/2016

Contributions received after the 15th of the month will appear in the next Bulletin.

James Alt & Susan Schwartz
Robin & Robert Axel
Helen Barth
Janet & Richard Bernardin
Bruce & Irene Block
Linda Block
Marvin & Karen Block
Eric Blumenfeld &
Annie Raulerson
Charlotte Bondy
Bondy/Vuolle Family
Alexandra Bonfante-Warren
Ulrich & Stacey Bonna
Jacqueline Anne Carperter
Susan & Robert Cayne
Keith & Patricia Clayton
William & June Counterman
Paul & Elise Cousineau
M. K. Drury
Virginia Edwards
Bertram & Shan Ellentuck
Lou & Irma Esakoff
Bob Francis
Judith & Ed Goetzmann
Vindhia Gordon

Robin Gould
Karen & Eitan Grunwald
Len & Michelle Guye-Hillis
Al Hepner
Constance & David Herrstrom
Louise & David Hoffman
Cynthia Imbrie
In memory of Bess Tremper
Michelle & Rick Jaeger
Sheila & Phil Jaeger
Henry and Kate John-Alder
Anna & Ben Johnson
Bahiru & Ann Kassahun
Lynn Lawson
David Leff
Karen Leibowitz
Jill Lipoti & Brad Garton
Steven & Mary Macher
Julia & James McArdle
Geraldine Millar
Ed & Rose Murphy
Murray family
Teri Nachtman
Lilia and Youri Nazarov
Lian Neeman

Tom Orlando
Bob & Alison Petrilla
Gregg and Elizabeth Possiel
Michael Przychocki
Patricia Roberts
Roosevelt Arts Project
Merle & Irv Rose
Marguerite Goldberg Rosenthal
Helen Seitz
Jonathan & Jeb Shahn
David Socholtzky
Shirley Sokolow
Cornelia Spoor
Arthur Stinson
Emily & Steve Taylor
Michael & Marilyn Ticktin
Mary & Rod Tulloss
Carol Watchler & Ann Baker
Judy & Bob Weinberg
Frank Wiesinger &
Theresa Secks
Mark & Judith Zuckerman
Zahora family

Help us to fill up this page.

Thank you for your generosity!

Send in a contribution today.

Please send contributions to:

Roosevelt Borough Bulletin, Inc.

P.O. Box 221, Roosevelt, NJ 08555

Help Wanted

The Roosevelt Borough Bulletin is a fully volunteer effort of its writers, editors, layout artist, and distribution captain. We would like to expand our team:

Roving Reporter – 4 hours a month – Write short features that focus on Roosevelt-specific themes.

Managing Editor in Training – 4 hours a month – Work with current Managing Editor to learn the editorial ropes for eventually assuming this esteemed role. Learn valuable editorial skills from a seasoned, if slightly over the hill, former professional editor who will unreservedly share everything there is to know about the production of the Roosevelt Borough Bulletin.

BUSINESS SPONSORS

The Bulletin publishes free-of-charge public information listings from Roosevelt residents and businesses, and from those in the immediate vicinity with ties to Roosevelt. Write: Roosevelt Bulletin, Box 221, Roosevelt, NJ 08555. Contributions are appreciated and are tax-deductible (suggested: \$50.00/year, \$60.00 if over 5 lines.) Deadline is the 15th of each month

AUTOMOBILE SERVICING

COMPACT KARS

3 Trenton Lakewood Road,
Clarksburg, NJ 08510
Complete Mechanical & Auto Collision
Repairs/Towing/Select Used Cars
609-259-6373

LANE TIRE CENTER

Complete Auto Care Center
All Work Guaranteed/Foreign &
Domestic
387 Mercer St., Hightstown
448-9500

SPECIALTIES

PET PLEASERS

Dog Training Services
Certified Dog Trainer
Pet Sitter
Boarding & Grooming
609-426-4209

MENDIES FAMILY FARM

65 N. Rochdale Ave., Roosevelt
Year-Round Farming
Community-Supported Agriculture
(CSA)
Spring/Summer & Winter CSA member-
ships
(609)-820-8809 • www.mendiesfarm.com

ATTENTION ROOSEVELTIANS!

We have been handling houses in Roosevelt
on every street in town since the early
1940's. Let us show you how we can save
you money.

THE ADLERMAN AGENCY, INSURORS

317 Forsgate Dr., Monroe Twp., NJ
08831
(609) 655-7788 Mel A. Adlerman CLU,
CPIA

MUSIC

GUITAR INSTRUCTION

Age 7 & up
David Brahinsky: 443-1898
STORYTELLING & FOLK SINGING
AVAILABLE FOR PARTIES.

PERSONAL CARE

TAI CHI CLASSES

Roosevelt Boro Hall
Wednesday 9:30 am – 11 am
Thursday 6 pm – 7 pm & 7 pm – 8 pm
June Counterman 609-448-3182
Email bilcount@quixnet.net

MATH TUTORING

ROOSEVELT STUDENTS:

Elementary through College
Do you occasionally need help with math
homework or help preparing for a test?
Call Mary Tulloss (Retired H.S. Teacher)
for appt.: 609-448-5096
Tutoring provided at no charge
in loving memory of Sarah Tulloss.

HOME IMPROVEMENT CONSTRUCTION, ET AL

Youri Nazarov Complete

Home Remodeling
609-443-3388
Long term contractor with Twin Rivers
Association. Now - a resident of
Roosevelt - Kitchens, bathrooms, base-
ments, flooring, interior doors, painting,
architectural moldings and so much more.
Free estimates. Licensed and insured.

GREG DEFOE

Handyman Service
Interior/Exterior Painting
Complete home repairs and renovations
Fully insured
PROMPT RESPONSE GUARANTEED
80 Pine Drive, Roosevelt, NJ 08555
609-448-4883 cell: 609-577-4081
gdefoe123@verizon.net

EAST WINDSOR FLOOR COVERING

We've got your entire floor covering needs
WOODVINYL**TILE**CERAMIC**
Wall-to-Wall Carpets, Area Rugs
East Windsor - 609-443-6999

HAGUE HEATING & COOLING LLC

For all your Heating &
Air Conditioning needs
Family owned and operated
Over 30 years in the business
NJ LIC.# 19HC00144600
Call 609-448-5424 Fax 609-426-0534

MICHAEL D. PRYZCHOCKI, GENERAL CONTRACTOR, INC.

Small Job to Total Construction.
Roofing, Additions.
Renovations – Bathroom, Kitchens,
Remodeling – Major and Minor Repairs.
References Available. Fully Insured,
Free Estimates, Certified Contractor.
10% Senior Citizen Discount 448-2180
N.J. Lic. #13VH01307200

ARTHUR R. STINSON CONSTRUCTION

Since 1982 Specializing in Home
Addition, Bathrooms & Kitchens &
Finished Basements
Brick & Concrete Patios-Stamped
Concrete
Energy-Saving Windows & Doors
Ceramic Tile
Free Estimates State License
448-0154 #13VH00923900
Fax 448-1122 Fully Insured

TOM ORLANDO PLUMBING & HEATING

Master Plumber's License #12179
Fully Insured & Bonded
Hot Water Heater Replacement or Repair
Hot Water Boiler Replacement or Repair
Sewer Line or Water Service Replacement
Repair or Replace Faucets, Toilets, Hose
Bibbs, etc.
609-903-6488



DR.K's DESIGNSCAPES INC.

P.O. Box 516, Roosevelt, NJ 08555
(609) 448-1108 / (732) 939-2085
www.drk-s.com
Fully Insured & Licensed
Craig Kaufman, President
Rutgers Landscape Architecture
Graduate
Snow Plowing & Snow Removal
Lawn Mowing / Tree Removal / Pruning
Designs / Planting Plans / Landscape
Lighting
Spring & Fall Clean-Up
Mulch / Stone / Top Soil
Gutter Clean-Out / Power Washing
Fertilizing & Weed / Pest Control
Driveways / Retaining Walls
Concrete Staining / Sealing
Patios Natural Stone & Concrete Pavers
Landscape Lighting
Fencing / Fire Wood

NON-PROFIT ORG.
U.S. Postage
PAID
Freehold, NJ
Permit No. 6

PRSRT STD
Postal Customer
Roosevelt, NJ 08555-0221

A P R I L

1 Mon.		School Closed for Spring Break, Roosevelt Public School
5 Tues.	12:30 pm	Senior Citizens Meeting, Borough Hall.
5 Tues.	7:00 pm	Planning Board, Borough Hall
6 Wed.		Recycling Pickup 
9 Sat.	10:00 am – 3:00 pm	Attack Autumn Olive (Raindate April 16)
9 Sat.	10:00 am – 3:30 pm	Stream Monitoring Training (Raindate April 16)
10 Sun.	10:00 am	Roosevelt First Aid Squad, Training Jack Rindt, Training Officer
11 Mon.	7:00 pm	Council Meeting, Borough Hall Jeff Ellentuck, Mayor
14 Thurs.	7:00 pm	Fire Company Business Meeting, Borough Hall Chris Suk, President 490-0931
16 Sat.	8:00 pm	Roosevelt Poets: A Leap in the Dark, Borough Hall
19 Tues.	7:00 pm	Roosevelt First Aid Squad, Business Meeting, Jeff Klein, President
20 Wed.	7:00 pm	Environmental Comm. Mtg., Borough Hall, Eitan Grunwald, Chair.
20 Wed.		Recycling Pickup 
25 Mon.	7:00 pm	Council Meeting, Borough Hall Jeff Ellentuck, Mayor
28 Thurs.	7:30 pm	RPS Board of Education, Natalie Warner, President, 609-903-1061

M A Y

3 Tues.	12:30 pm	Senior Citizens Meeting, Borough Hall
3 Tues.	7:00 pm	Planning Board, Borough Hall
4 Wed.		Recycling Pickup 
6 Fri.	8:00 pm	Roosevelt String Band in Concert, Borough Hall
7 Sat.	8:00 pm	Roosevelt String Band in Concert, Borough Hall
8 Sun.	10:00 am	Roosevelt First Aid Squad, Training Jack Rindt, Training Officer
9 Mon.	7:00 pm	Council Meeting, Borough Hall Jeff Ellentuck, Mayor
12 Thurs.	7:00 pm	Fire Company Business Meeting, Borough Hall Chris Suk, President 490-0931
17 Tues.	7:00 pm	Roosevelt First Aid Squad, Business Meeting, Jeff Klein, President
18 Wed.	7:00 pm	Environmental Comm. Mtg., Borough Hall Eitan Grunwald, Chair.
18 Wed.		Recycling Pickup 
23 Mon.	7:00 pm	Council Meeting, Borough Hall Jeff Ellentuck, Mayor
26 Thurs.	7:30 pm	RPS Board of Education, Natalie Warner, President, 609-903-1061

RECYCLING DATES

April 6, 20
May 4, 18

ZONING PERMITS

Tuesdays 4 – 6 PM

STATE PERMITS

Wednesdays 1 – 3

BOROUGH HOUSING

INSPECTIONS
Tuesdays 5 – 6 PM,
Borough Hall

An electronic calendar was installed on the Roosevelt Board of Education's website containing information about state testing, upcoming field trips, events and additional pertinent information. Learn more about all of the happenings in our school, visit RPS website: www.rps1.org. Please send notice of your events to Bulletin at P.O. Box 221 or email to RooseveltBulletinSubmissions@gmail.com.